

ASCO COMPONENTS

Tel: (0044) 121 773 3090 Fax: (0044) 121 773 3390
E-mail: info@ascocomponents.co.uk

PRODUCT PROFILE



www.ascocomponents.co.uk



UNIT 19,
GREEN LANE INDUSTRIAL ESTATE
SECOND AVENUE
BORDESLEY GREEN
BIRMINGHAM
B9 5QP

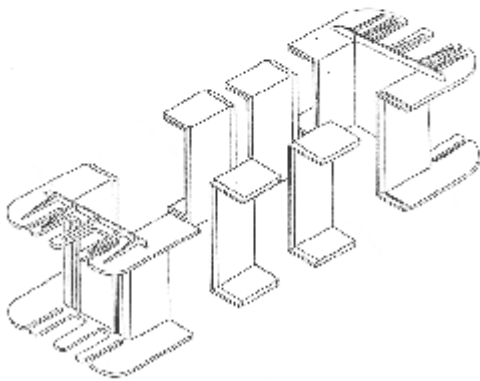
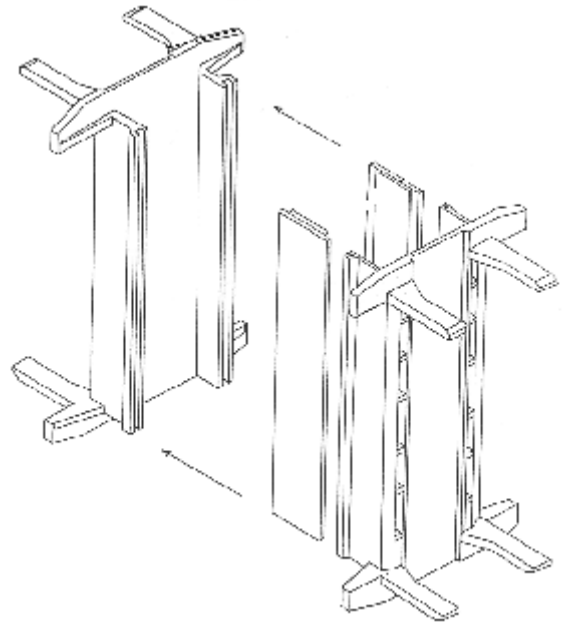
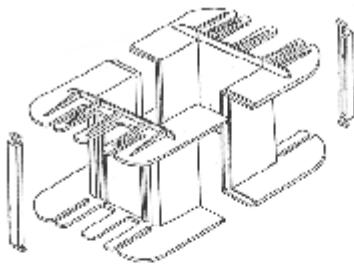
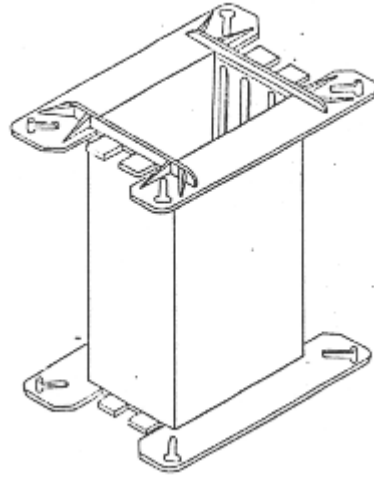
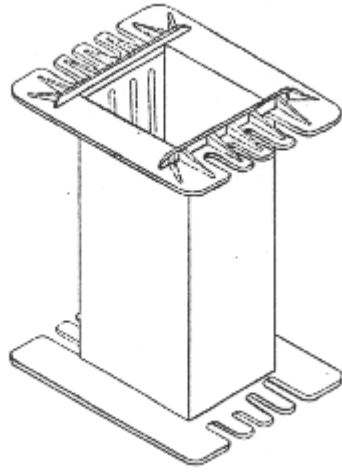
TEL : 0121 773 3090
FAX : 0121 773 3390

www.ascocomponents.co.uk

CONTENTS

- **BOBBINS**
 - metric 1ph and 3ph
 - C Core bobbins
 - fabricated
 - inbuilt "snap on" terminal type
- **CORE BOLT INSULATORS-** "Top hat" shoulder washers M4 - M12
- **LAMINATIONS**
 - metric 1ph and 3ph
 - Linton and Hirst information
- **RAIL MOUNT TERMINALS**
 - transformer terminals and accessories
 - terminal mounting rails / frames
- **ENCLOSURES**
 - 'SP' type wall and floor mounting
 - 'TP' type three phase enclosure
- **END FRAMES/ANGLES**
 - standard frames
 - SPEEDFIX terminal mounting end frames
 - standard angles
 - custom made brackets
- **MISCELLANEOUS ITEMS**
 - polyester glass sheet / profiles
 - dogbone duct strip
 - grain oriented cut cores

BOBBINS



TRANSFORMER BOBBINS

WE ARE ABLE TO SUPPLY A COMPREHENSIVE RANGE OF BOBBINS FOR ALL SIZES OF MANUFACTURERS RANGING FROM SMALL PCB STYLE SURFACE MOUNT BOBBINS TO LARGE POWER TRANSFORMER TYPES.

BOBBINS ARE AVAILABLE IN A VARIETY OF MATERIALS OFFERING FLEXIBILITY IN DESIGN FOR A SPAN OF TEMPERATURE RANGES.

STANDARD STOCK MATERIAL USED FOR BOBBIN MANUFACTURE IS 30% GLASS FILLED NYLON 6. OTHER MATERIALS ARE AVAILABLE AND CAN BE QUOTED FOR ACCORDINGLY.

CODES THAT APPEAR AS SUFFIXES TO THE BOBBIN REF ARE AS FOLLOWS:

P.T	=	SUITABLE FOR PINNING
S/S	=	SINGLE SECTION
D/S	=	DOUBLE SECTION CENTRAL FLANGE
F/F	=	FLUSH FLANGE ON ONE SIDE
P.C.B	=	P.C.B MOUNTING
W/S	=	WINDING SPACERS AVAILABLE
TM	=	PRE-MOULDED SNAP ON TERMINAL MOUNTING

BRACKETED CODES INDICATE 2+ VERSIONS ON ONE BOBBIN

ALL DIMENSIONS ARE IN MILLIMETRES.

PRE FABRICATED BOBBINS

AS WELL AS NYLON MOULDED BOBBINS ASCO CAN SUPPLY PRE FABRICATED BOBBINS. AGAIN THESE ARE AVAILABLE IN A WIDE RANGE OF MATERIALS AND THE FLEXIBILITY OFFERED BY THIS TYPE OF BOBBIN IS BEING ABLE TO HAVE NON STANDARD OR CUSTOM BUILT MODELS WITHOUT BEING PENALISED WITH LARGE TOOLING COSTS.

STANDARD NYLON 6 BOBBINS

LAMINATION TYPE : EI 40-13	1PH
-----------------------------------	------------

BOBBIN REF	BOBBIN STACK	LIMB X STACK X WINDING LENGTH	WINDING DEPTH AVAILABLE
BBEI40-13/13/PT	13	13.5 X 13 X 19.5	
BBEI40-13/13/DSPT	13	13.5 X 13 X 19.5	
BBEI40-13/15/SS	15	13.5 X 15 X 19.5	

LAMINATION TYPE : EI 48	1PH
--------------------------------	------------

BOBBIN REF	BOBBIN STACK	LIMB X STACK X WINDING LENGTH	WINDING DEPTH AVAILABLE
BBEI48/16/DSPT	16	16.5 X 16 X 23.5	
BBEI48/16/PCB	16	16.5 X 16 X 23.5	
BBEI48/20/PCB	20	16.5 X 20 X 23.5	

LAMINATION TYPE : EI 57	1PH
--------------------------------	------------

BOBBIN REF	BOBBIN STACK	LIMB X STACK X WINDING LENGTH	WINDING DEPTH AVAILABLE
BBEI57/19/SS	19	19.5 X 19 X 27.8	
BBEI57/19/DS	19	19.5 X 19 X 27.8	
BBEI57/25/SS	25	19.5 X 25 X 27.8	
BBEI57/25/DS	25	19.5 X 25 X 27.8	

LAMINATION TYPE : EI 60	1PH
--------------------------------	------------

BOBBIN REF	BOBBIN STACK	LIMB X STACK X WINDING LENGTH	WINDING DEPTH AVAILABLE
BBEI60/20/SS	20	20.5 X 20 X 29.5	
BBEI60/20/DS	20	20.5 X 20 X 29.5	
BBEI60/25/SS	25	20.5 X 25 X 29.5	
BBEI60/25/DS	25	20.5 X 25 X 29.5	

LAMINATION TYPE : EI 55-66	1PH
-----------------------------------	------------

BOBBIN REF	BOBBIN STACK	LIMB X STACK X WINDING LENGTH	WINDING DEPTH AVAILABLE
BBEI55-66/22/SS	22	22.5 X 22 X 33.8	

LAMINATION TYPE : EI 58 X 68 1PH

BOBBIN REF	BOBBIN STACK	LIMB X STACK X WINDING LENGTH	WINDING DEPTH AVAILABLE
BBE15868/25/SS	25	22.5 X 25 X 33.8	
BBE15868/25/DS	25	22.5 X 25 X 33.8	
BBE15868/30/SS	30	22.5 X 30 X 33.8	
BBE15868/30/DS	30	22.5 X 30 X 33.8	
BBE15868/35/SS	35	22.5 X 35 X 33.5	
BBE15868/30/SSPT	30	22.5 X 30 X 33.5	
BBE15868/40/SS	40	22.5 X 40 X 33.5	

LAMINATION TYPE : EI 75 1PH

BOBBIN REF	BOBBIN STACK	LIMB X STACK X WINDING LENGTH	WINDING DEPTH AVAILABLE
BBE175/25/SS	25	25.5 X 25 X 33	
BBE175/25/DS	25	25.5 X 25 X 33	
BBE175/30/SSPT	30	25.5 X 30 X 33	
BBE175/30/DSPT	30	25.5 X 30 X 33	
BBE175/35/SSPT	35	25.5 X 35 X 33	
BBE175/40/SS	40	25.5 X 40 X 33	
BBE175/40/DS	40	25.5 X 40 X 33	

LAMINATION TYPE : EI 84 1PH

BOBBIN REF	BOBBIN STACK	LIMB X STACK X WINDING LENGTH	WINDING DEPTH AVAILABLE
BBE184/26/SS	26	28.5 X 26 X 37	
BBE184/30/SS	30	28.5 X 30 X 37	
BBE184/30/DS	30	28.5 X 30 X 37	
BBE184/35/SS	35	28.5 X 35 X 37	
BBE184/40/SS	40	28.5 X 40 X 37	
BBE184/40/DS	40	28.5 X 40 X 37	
BBE184/45/SS	45	28.5 X 45 X 37	
BBE184/45/DS	45	28.5 X 45 X 37	
BBE184/50/SS	50	28.5 X 50 X 37	
BBE184/50/DS	50	28.5 X 50 X 37	
BBE184/55/SS	55	28.5 X 55 X 37	
BBE184/55/DS	55	28.5 X 55 X 37	

LAMINATION TYPE : EI 96	1PH
--------------------------------	------------

BOBBIN REF	BOBBIN STACK	LIMB X STACK X WINDING LENGTH	WINDING DEPTH AVAILABLE
BBEI96/32/SS	32	32.5 X 32 X 43	
BBEI96/32/DS	32	32.5 X 35 X 43	
BBEI96/35/SS	35	32.5 X 35 X 43	
BBEI96/40/SS	40	32.5 X 40 X 43	
BBEI96/40/DS	40	32.5 X 40 X 43	
BBEI96/40/TM	40	32.5 X 40 X 43	
BBEI96/45/SS	45	32.5 X 45 X 43	
BBEI96/45/DS	45	32.5 X 45 X 43	
BBEI96/50/SS	50	32.5 X 50 X 43	
BBEI96/50/DS	50	32.5 X 50 X 43	
BBEI96/50/TM	50	32.5 X 50 X 43	
BBEI96/60/SS	60	32.5 X 60 X 43	
BBEI96/60/DS	60	32.5 X 60 X 43	
BBEI96/70/SS	70	32.5 X 70 X 43	

LAMINATION TYPE : EI 100	1PH
---------------------------------	------------

BOBBIN REF	BOBBIN STACK	LIMB X STACK X WINDING LENGTH	WINDING DEPTH AVAILABLE
BBEI100/28/SS	28	32.5 X 28 X 49	
BBEI100/32/SS	32	32.5 X 32 X 49	
BBEI100/35/SS	35	32.5 X 35 X 49	
BBEI100/40/SS	40	32.5 X 40 X 49	
BBEI100/50/SS	50	32.5 X 50 X 49	
BBEI100/60/SS	60	32.5 X 60 X 49	

LAMINATION TYPE : EI 108	1PH
---------------------------------	------------

BOBBIN REF	BOBBIN STACK	LIMB X STACK X WINDING LENGTH	WINDING DEPTH AVAILABLE
BBEI108/36/SS	36	36 X 36 X 53.8	
BBEI108/45/SS	45	36 X 45 X 53.8	
BBEI108/50/SS	50	36 X 50 X 53.8	
BBEI108/55/SS	55	36 X 55 X 53.8	
BBEI108/60/SS	60	36 X 60 X 53.8	
BBEI108/70/SS	70	36 X 70 X 53.8	

LAMINATION TYPE : 120 (English pattern) 1PH

BOBBIN REF	BOBBIN STACK	LIMB X STACK X WINDING LENGTH	WINDING DEPTH AVAILABLE
BB120/38/SS	38 (1 1/2")	38 X 38 X 53	
BB120/38/DS	38 (1 1/2")	38 X 38 X 53	
BB120/44/SS	44 (1 3/4")	38 X 44 X 53	
BB120/44/DS	44 (1 3/4")	38 X 44 X 53	
BB120/50/SS	50 (2")	38 X 50 X 53	
BB120/50/DS	50 (2")	38 X 50 X 53	
BB120/60/SS	60 (2 3/8")	38 X 60 X 53	
BB120/60/DS	60 (2 3/8")	38 X 60 X 53	
BB120/76/SS	76 (3")	38 X 76 X 53	
BB120/76/DS	76 (3")	38 X 76 X 53	

LAMINATION TYPE : EI 120 1PH

BOBBIN REF	BOBBIN STACK	LIMB X STACK X WINDING LENGTH	WINDING DEPTH AVAILABLE
BBE1120/30/SS	30	40.5 X 30 X 54	
BBE1120/40/SS	40	40.5 X 40 X 54	
BBE1120/40/DS	40	40.5 X 40 X 54	
BBE1120/40/FF	40	40.5 X 40 X 54	
BBE1120/45/SS	45	40.5 X 45 X 54	
BBE1120/50/SS	50	40.5 X 50 X 54	
BBE1120/50/DS	50	40.5 X 50 X 54	
BBE1120/50/FF	50	40.5 X 50 X 54	
BBE1120/55/SS	55	40.5 X 55 X 54	
BBE1120/60/SS	60	40.5 X 60 X 54	
BBE1120/60/DS	60	40.5 X 60 X 54	
BBE1120/60/FF	60	40.5 X 60 X 54	
BBE1120/65/SS	65	40.5 X 65 X 54	
BBE1120/70/SS	70	40.5 X 70 X 54	
BBE1120/70/DS	70	40.5 X 70 X 54	
BBE1120/70/FF	70	40.5 X 70 X 54	
BBE1120/80/SS	80	40.5 X 80 X 54	
BBE1120/80/DS	80	40.5 X 80 X 54	
BBE1120/80/FF	80	40.5 X 80 X 54	

LAMINATION TYPE : EI 135 1PH

BOBBIN REF	BOBBIN STACK	LIMB X STACK X WINDING LENGTH	WINDING DEPTH AVAILABLE
BBE1135/45/SS	45	45.5 X 45 X 61	
BBE1135/45/FF	45	45.5 X 45 X 61	
BBE1135/60/SS	60	45.5 X 60 X 61	
BBE1135/60/FF	60	45.5 X 60 X 61	
BBE1135/70/SS	70	45.5 X 70 X 61	
BBE1135/90/SS	90	45.5 X 90 X 61	

LAMINATION TYPE : EI 150N 1PH

BOBBIN REF	BOBBIN STACK	LIMB X STACK X WINDING LENGTH	WINDING DEPTH AVAILABLE
BBE150N/40/SS	40	51 X 40 X 68	
BBE150N/40/DS	40	51 X 40 X 68	
BBE150N/40/FF	40	51 X 40 X 68	
BBE150N/50/SS	50	51 X 50 X 68	
BBE150N/50/DS	50	51 X 50 X 68	
BBE150N/50/FF	50	51 X 50 X 68	
BBE150N/60/SS	60	51 X 60 X 68	
BBE150N/60/DS	60	51 X 60 X 68	
BBE150N/60/FF	60	51 X 60 X 68	
BBE150N/70/SS	70	51 X 70 X 68	
BBE150N/70/DS	70	51 X 70 X 68	
BBE150N/70/FF	70	51 X 70 X 68	
BBE150N/80/SS	80	51 X 80 X 68	
BBE150N/80/DS	80	51 X 80 X 68	
BBE150N/80/FF	80	51 X 80 X 68	
BBE150N/90/SS	90	51 X 90 X 68	
BBE150N/90/DS	90	51 X 90 X 68	
BBE150N/90/FF	90	51 X 90 X 68	
BBE150N/100/SS	100	51 X 100 X 68	
BBE150N/100/DS	100	51 X 100 X 68	
BBE150N/100/FF	100	51 X 100 X 68	

LAMINATION TYPE : EI 180 1PH

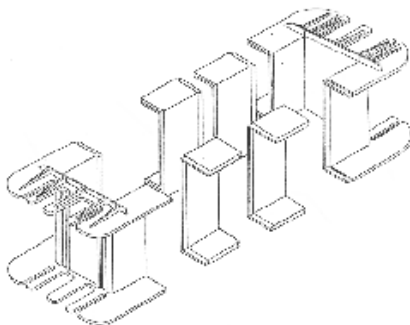
BOBBIN REF	BOBBIN STACK	LIMB X STACK X WINDING LENGTH	WINDING DEPTH AVAILABLE
BBE180/60/SS	60	60 X 60 X 89	
BBE180/60/DS	60	60 X 60 X 89	
BBE180/60/FF	60	60 X 60 X 89	
BBE180/70/SS	70	60 X 70 X 89	
BBE180/70/DS	70	60 X 70 X 89	
BBE180/70/FF	70	60 X 70 X 89	
BBE180/80/SS	80	60 X 80 X 89	
BBE180/80/DS	80	60 X 80 X 89	
BBE180/80/FF	80	60 X 80 X 89	
BBE180/90/SS	90	60 X 90 X 89	
BBE180/90/DS	90	60 X 90 X 89	
BBE180/90/FF	90	60 X 90 X 89	
BBE180/100/SS	100	60 X 100 X 89	
BBE180/100/DS	100	60 X 100 X 89	
BBE180/100/FF	100	60 X 100 X 89	
BBE180/120/SS	120	60 X 120 X 89	
BBE180/120/DS	120	60 X 120 X 89	
BBE180/120/FF	120	60 X 120 X 89	

LAMINATION TYPE : EI 192 1PH

BOBBIN REF	BOBBIN STACK	LIMB X STACK X WINDING LENGTH	WINDING DEPTH AVAILABLE
BBE192/60/SS	60	65 X 60 X 87	
BBE192/64/SS	64	65 X 65 X 87	
BBE192/64/DS	64		
BBE192/70/SS	70	65 X 70 X 87	
BBE192/70/DS	70		
BBE192/80/SS	80	65 X 80 X 87	
BBE192/80/DS	80		
BBE192/90/SS	90	65 X 90 X 87	
BBE192/90/DS	90		
BBE192/100/SS	100	65 X 100 X 87	
BBE192/110/SS	110	65 X 110 X 87	
BBE192/120/SS	120	65 X 120 X 87	
BBE192/130/SS	130	65 X 130 X 87	

LAMINATION TYPE : EI 240 1PH

BOBBIN REF	BOBBIN STACK	LIMB X STACK X WINDING LENGTH	WINDING DEPTH AVAILABLE
SEE NOTE BELOW	80	80 X 80 X 110	
	90	80 X 90 X 110	
	100	80 X 100 X 110	
	110	80 X 110 X 110	
	120	80 X 120 X 110	
BBE240/30/SS	30MM ½ BOBBIN		
BBE240/30/DS	30MM ½ BOBBIN TWIN SECTION		
BBE240/40/SS	40MM 1/2 BOBBIN	-----	
BBE240/40/DS	40MM ½ BOBBIN TWIN SECTION		
BBE240/50/SS	50MM 1/2 BOBBIN	-----	
BBE240/50/DS	50MM ½ BOBBIN TWIN SECTION		
BBE240/60/SS	60MM 1/2 BOBBIN	-----	
BBE240/60/DS	60MM ½ BOBBIN TWIN SECTION		
BBSPEI240/50	EI240 x 50mm Extension Spacer		



NOTE : EI 240 BOBBINS ARE SUPPLIED AS TWO INTERLOCKING HALVES. INDIVIDUAL HALVES HAVE STACK DEPTHS OF 30MM, 40 MM, 50 MM & 60 MM. COMBINATIONS OF THESE HALVES MAKE UP STACK DEPTHS IN THE RANGE OF 60 THROUGH TO 120MM.

BY ADDING AN EXTENSION PIECE STACK DEPTHS OF UP TO 170MM ARE ACHEIVABLE

SINGLE / THREE PHASE BOBBINS (UI / 3UI LAMINATION TYPES)

LAMINATION TYPE : UI 39 / 3UI 39

BOBBIN REF	BOBBIN STACK	LIMB X STACK X WINDING LENGTH	WINDING DEPTH AVAILABLE
BBUI39/13.6/SS	13.6	13.5 X 13.6 X 36.5	

LAMINATION TYPE : UI 60 / 3UI 60

BOBBIN REF	BOBBIN STACK	LIMB X STACK X WINDING LENGTH	WINDING DEPTH AVAILABLE
BBUI60/21/SS	21	20.6 X 21 X 56.6	
BBUI60/30/SS	30	20.6 X 30 X 56.6	

LAMINATION TYPE : UI 66

BOBBIN REF	BOBBIN STACK	LIMB X STACK X WINDING LENGTH	WINDING DEPTH AVAILABLE
BBUI66/30/SS	30	23.6 X 30 X 66	
BBUI66/40/SS	40	23.6 X 40 X 66	
BBUI66/45/SS	45	23.6 X 45 X 66	

LAMINATION TYPE : UI 75 / 3UI 75

BOBBIN REF	BOBBIN STACK	LIMB X STACK X WINDING LENGTH	WINDING DEPTH AVAILABLE
BBUI75/26/SS	26	25.6 X 26 X 74	
BBUI75/41/SS	41	25.6 X 41 X 74	

LAMINATION TYPE : UI90 / 3UI 90

BOBBIN REF	BOBBIN STACK	LIMB X STACK X WINDING LENGTH	WINDING DEPTH AVAILABLE
BBUI90/30/SS	30	30 X 30 X 83	
BBUI90/35/SS	35	30 X 35 X 83	
BBUI90/40/SS	40	30 X 40 X 83	
BBUI90/45/SS	45	30 X 45 X 83	
BBUI90/50/SS	50	30 X 50 X 83	
BBUI90/55/SS	55	30 X 55 X 83	
BBUI90/60/SS	60	30 X 60 X 83	
BBUI90/75/SS	75	30 X 75 X 83	

LAMINATION TYPE : UI 100

BOBBIN REF	BOBBIN STACK	LIMB X STACK X WINDING LENGTH	WINDING DEPTH AVAILABLE
BBU1100/40/SS	40	40 X 40 X 100	
BBU1100/50/SS	50	40 X 50 X 100	
BBU1100/60/SS	60	40 X 60 X 100	
BBU1100/70/SS	70	40 X 70 X 100	
BBU1100/100/SS	100	40 X 100 X 100	

LAMINATION TYPE : UI 120 / 3UI 120

BOBBIN REF	BOBBIN STACK	LIMB X STACK X WINDING LENGTH	WINDING DEPTH AVAILABLE
BBU1120/40/SS	40	40 X 40 X 115	
BBU1120/40/DS	40	40 X 40 X 115	
BBU1120/50/SS	50	40 X 50 X 115	
BBU1120/50/DS	50	40 X 50 X 115	
BBU1120/60/SS	60	40 X 60 X 115	
BBU1120/60/DS	60	40 X 60 X 115	
BBU1120/75/SS	75	40 X 75 X 115	
BBU1120/75/DS	75	40 X 75 X 115	

LAMINATION TYPE : UI 125

BOBBIN REF	BOBBIN STACK	LIMB X STACK X WINDING LENGTH	WINDING DEPTH AVAILABLE
BBU1125/50/SS	50	50 X 50 X 125	

LAMINATION TYPE : UI 150 / 3 UI 150

BOBBIN REF	BOBBIN STACK	LIMB X STACK X WINDING LENGTH	WINDING DEPTH AVAILABLE
BBU1150/50/SS	50	50 X 50 X 143	20MM
BBU1150/60/SS	60	50 X 60 X 143	
BBU1150/70/SS	70	50 X 70 X 143	
BBU1150/80/SS	80	50 X 80 X 143	
BBU1150/90/SS	90	50 X 90 X 143	
BBU1150/100/SS	100	50 X 100 X 143	
BBU1150/WS	--	DUCT STRIP	N/A

LAMINATION TYPE : UI 180 / 3UI 180

BOBBIN REF	BOBBIN STACK	LIMB X STACK X WINDING LENGTH	WINDING DEPTH AVAILABLE
BBUI180/60/SS	60	60 X 60 X 170	25MM
BBUI180/70/SS	70	60 X 70 X 170	
BBUI180/70/DS	70	60 X 70 X 170	
BBUI180/80/SS	80	60 X 80 X 170	
BBUI180/90/SS	90	60 X 90 X 170	
BBSP60/100	100	STACK SPACER	N/A
BBSP60/110	110	STACK SPACER	
BBSP60/120	120	STACK SPACER	
BBSP60/130	130	STACK SPACER	
BBUI180/WS	--	DUCT STRIP FOR 1/2 BOBBIN BBUI180	
BBUI180/WS/1	N/A	DUCT STRIP FULL BOBBIN	
BBUI180	N/A	½ BOBBIN	25MM

Bobbin type UI180 is also available in a half bobbin style with a range of stack spacers that can be inserted into each half bobbin to form a complete bobbin with stack depths up to 130mm as standard. This has the advantage of lowering stocking and ordering costs and offers the possibility of an infinitely variable stack depth.

LAMINATION TYPE : UI 210 / 3UI 210

BOBBIN REF	BOBBIN STACK	LIMB X STACK X WINDING LENGTH	WINDING DEPTH AVAILABLE
BBUI210/70/SS	70	70 X 70 X 202	30MM
BBUI210/80/SS	80	70 X 80 X 202	
BBUI210/90/SS	90	70 X 90 X 202	
BBUI210/100/SS	100	70 X 100 X 202	
BBSP70/110	110	STACK SPACER	N/A
BBSP70/120	120	STACK SPACER	
BBSP70/130	130	STACK SPACER	
BBSP70/140	140	STACK SPACER	
BBUI210/WS	--	DUCT STRIP FOR 1/2 BOBBIN BBUI210	N/A
BBUI210/WS/1	N/A	DUCT STRIP FOR FULL BOBBIN	
BBUI210	N/A	½ BOBBIN	30MM

Bobbin type UI210 is also available in a half bobbin style with a range of stack spacers that can be inserted into each half bobbin to form a complete bobbin with stack depths up to 140mm as standard. This has the advantage of lowering stocking and ordering costs and offers the possibility of an infinitely variable stack depth.

LAMINATION TYPE : UI 240 / 3UI 240

BOBBIN REF	BOBBIN STACK	LIMB X STACK X WINDING LENGTH	WINDING DEPTH AVAILABLE
BBUI240	N/A	½ BOBBIN	35MM
BBUI240/WS	---	DUCT STRIP	N/A
BBSP80/80	80	STACK SPACER	N/A
BBS80/90	90	STACK SPACER	
BBSP80/100	100	STACK SPACER	
BBSP80/110	110	STACK SPACER	
BBSP80/120	120	STACK SPACER	
BBSP80/130	130	STACK SPACER	
BBSP80/140	140	STACK SPACER	
BBSP80/150	150	STACK SPACER	

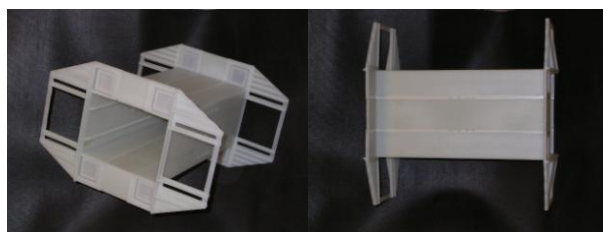
Bobbin type UI240 is supplied as a half bobbin with a range of stack spacers that can be inserted into each half bobbin to form a complete bobbin with stack depths up to 150mm as standard. This has the advantage of lowering stocking and ordering costs and offers the possibility of an infinitely variable stack depth.

LAMINATION TYPE : 3UI 300

BOBBIN REF	BOBBIN STACK	LIMB X STACK X WINDING LENGTH	WINDING DEPTH AVAILABLE
BBUI300/80/SS	80	100 X 80 X 290	45MM
BBUI300/90/SS	90	100 X 90 X 290	
BBUI300/100/SS	100	100 X 100 X 290	
BBUI300/110/SS	110	100 X 110 X 290	
BBUI300/120/SS	120	100 X 120 X 290	
BBUI300/130/SS	130	100 X 130 X 290	
BBUI300/140/SS	140	100 X 140 X 290	
BBUI300/150/SS	150	100 X 150 X 290	
BBUI300	VARIABLE	100 X ?? X 290	
BBUI300/WS	--	DUCT STRIP	N/A

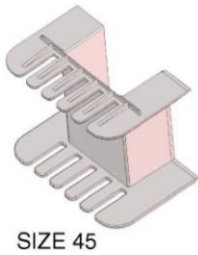
Bobbin 3UI 300 is available as a half bobbin version. Stack spacers are supplied as GPO3 class F polyester glass sheet cut to the winding length. Customers can then cut these to the desired stack depth as and when required.

New!! Please call for more details.

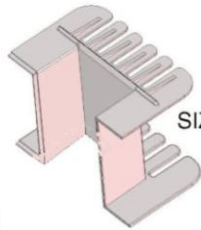


UI/3UI300 Bobbins and Spacers
 New range available with stack spacers up to 160mm..... add a stack extender and build to an unlimited stack size!!

EI 270/90
UK 217/90

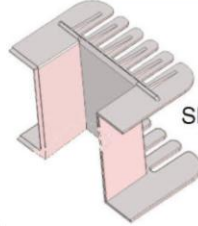


SIZE 45



SIZE 45

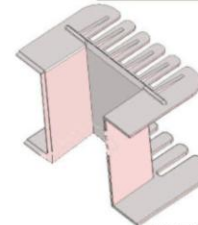
EI 270/100
UK 217/100



SIZE 55



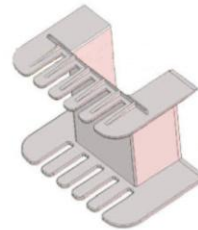
EI 270/110
UK 217/110



SIZE 55

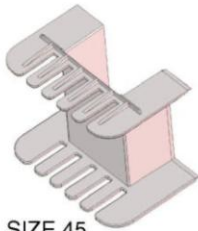
Imperial UK217 Metric EI270 Nylon Bobbins

ASCO Components
Tel 0121 773 3090
Fax 0121 773 3390
sales@ascocomponents.co.uk

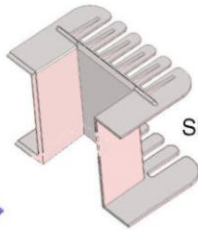


SIZE 55

EI 270/120
UK 217/120

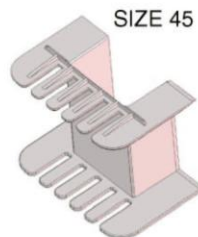
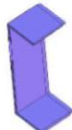


SIZE 45



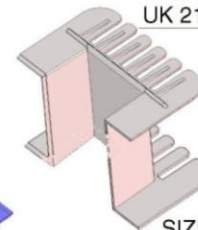
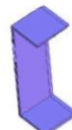
SIZE 45

STACK HEIGHT 30



SIZE 45

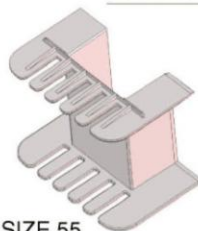
STACK HEIGHT 40



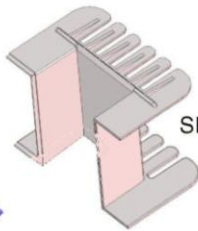
EI 270/130
UK 217/130

SIZE 45

EI 270/140
UK 217/140



SIZE 55

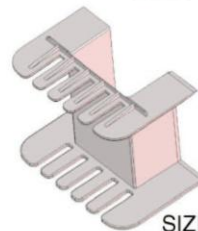


SIZE 55

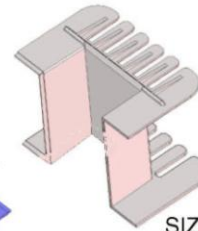
STACK HEIGHT 30



EI 270/150
UK 217/150



SIZE 55



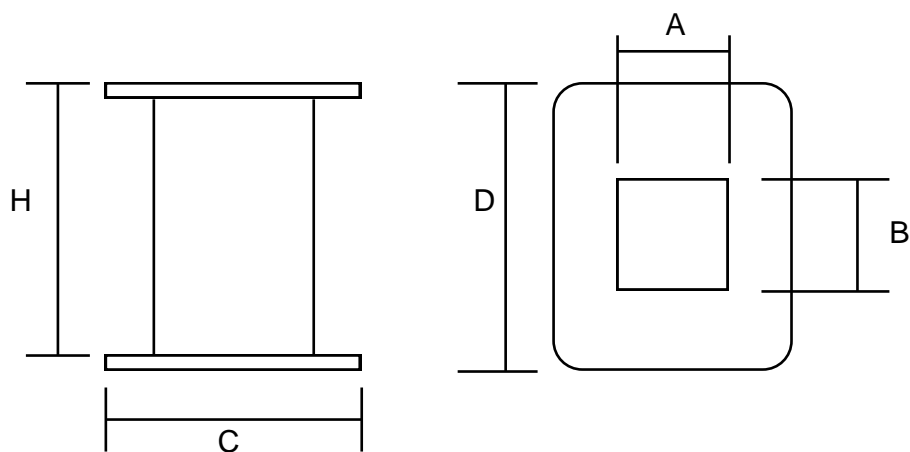
SIZE 55

STACK HEIGHT 40



'C' CORE BOBBINS

BOBBIN REF		CORE REF	A	B	C	D	H
CC1344	2709/N	Q19	19	21	37.5	56	36
CC1345	2713/N	Q25	19	26.5	43	62	36
CC1346	2710/N	Q38	19	39.5	43	72	36
CC1347	2695/N	T25	23	26.5	52.5	67	49
CC1348	2696/N	T32	23	33.5	52.5	73	49
CC1349	2697/N	U32	23	33.5	58.5	79	54
CC1350	2714/N	U38	23	40	58	85	54
CC1351	2698/N	V22	29	23	72.5	77	60
CC1352	2717/N	V29	29	31	72	84	60
CC1353	2699/N	V38	29	39	72	93	60
CC1354	2719/N	V51	29	53	72.5	107	60
CC1355	2721/N	X29	35	31	91	102	72
CC1356	2724/N	X51	35	53	90	121	72



FABRICATED BOBBINS

We are able to offer fabricated bobbins for any size of lamination. Custom built bobbins are also available to your drawings / specifications.

These types of bobbins can be produced in a wide variety of materials. The more popular materials are:

SRBP (Synthetic Resin Bonded Paper) good for class E usage. Low cost material.

GPO3 (Polyester Glass Laminate) good for class F usage. Good tracking resistance and low flammability rating

SG200 (Polyester Glass Laminate) good for Class H usage. Excellent temperature rating with UL94 VO flammability.

As well as fabricated bobbins we are able to offer a range of insulating tubes and profiles.

TERMINAL BOBBINS FOR “SNAP ON” TYPE TERMINALS

Our range of snap on terminal bobbins offers a cost effective alternative to similar bobbins in the market at present.

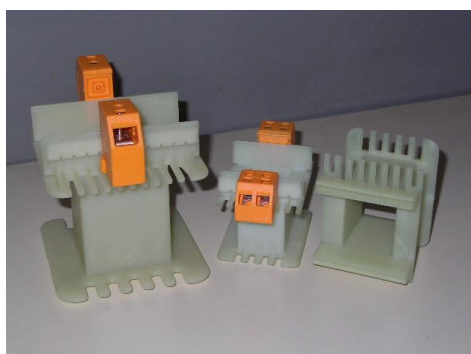


Bobbins with Inbuilt Terminal Mounts
MATERIAL: 30% GLASS FILLED UL NORMS

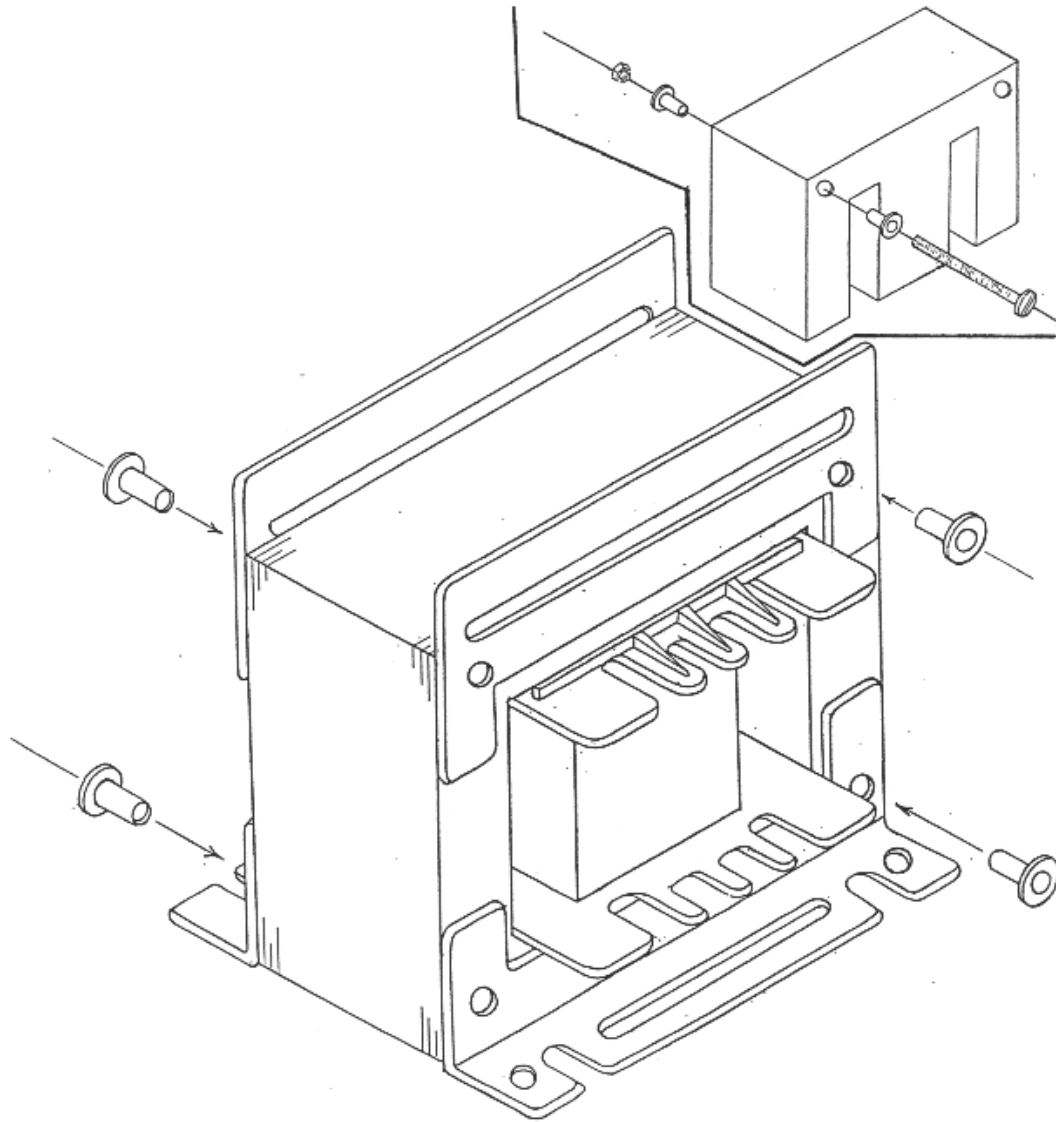
Jun-05

Lamination / Stack	EI 75	ASCO Part No
EI 75/26,5	BOBBIN EI75 X 26,5 Base Flange with Open Slots	BBE175/26/SS/AP
EI 75/26,5	BOBBIN EI75 X 26,5 Base Flange with Closed Slots (plain)	BBE175/26/SS/CP
EI 75/32,7	BOBBIN EI75 X 32,7 Base Flange with Open Slots	BBE175/32/SS/AP
EI 75/32,7	BOBBIN EI75 X 32,7 Base Flange with Closed Slots (plain)	BBE175/32/SS/CP
EI 75/41,5	BOBBIN EI75 X 41,5 Base Flange with Open Slots	BBE175/41/SS/AP
EI 75/41,5	BOBBIN EI75 X 41,5 Base Flange with Closed Slots (plain)	BBE175/41/SS/CP
Lamination / Stack	EI 84	ASCO Part No
EI 84/29,5	BOBBIN EI84 X 29,5 Base Flange with Open Slots	BBE184/30/SS/AP
EI 84/29,5	BOBBIN EI84 X 29,5 Base Flange with Closed Slots (plain)	BBE184/30/SS/CP
EI 84/43,7	BOBBIN EI84 X 43,7 Base Flange with Open Slots	BBE184/44/SS/AP
EI 84/43,7	BOBBIN EI84 X 43,7 Base Flange with Closed Slots (plain)	BBE184/44/SS/CP
EI 84/52,5	BOBBIN EI84 X 52,5 Base Flange with Open Slots	BBE184/53/SS/AP
EI 84/52,5	BOBBIN EI84 X 52,5 Base Flange with Closed Slots (plain)	BBE184/53/SS/CP
Lamination / Stack	EI 96	ASCO Part No
EI 96/35,7	BOBBIN EI96 X 35,7 Base Flange with Open Slots	BBE196/38/SS/AP
EI 96/35,7	BOBBIN EI96 X 35,7 Base Flange with Closed Slots (plain)	BBE196/38/SS/CP
EI 96/45,7	BOBBIN EI96 X 45,7 Base Flange with Open Slots	BBE196/45/SS/AP
EI 96/45,7	BOBBIN EI96 X 45,7 Base Flange with Closed Slots (plain)	BBE196/45/SS/CP
EI 96/59,7	BOBBIN EI96 X 59,7 Base Flange with Open Slots	BBE196/60/SS/AP
EI 96/59,7	BOBBIN EI96 X 59,7 Base Flange with Closed Slots (plain)	BBE196/60/SS/CP
Lamination / Stack	EI 120	ASCO Part No
EI 120/41,8	BOBBIN EI120 X 41,8 Base Flange with Open Slots	BBE120/42/SS/AP
EI 120/41,8	BOBBIN EI120 X 41,8 Base Flange with Closed Slots (plain)	BBE120/42/SS/CP
EI 120/53,8	BOBBIN EI120 X 53,8 Base Flange with Open Slots	BBE120/54/SS/AP
EI 120/53,8	BOBBIN EI120 X 53,8 Base Flange with Closed Slots (plain)	BBE120/54/SS/CP
EI 120/61,8	BOBBIN EI120 X 61,8 Base Flange with Open Slots	BBE120/62/SS/AP
EI 120/61,8	BOBBIN EI120 X 61,8 Base Flange with Closed Slots (plain)	BBE120/62/SS/CP
EI 120/73,8	BOBBIN EI120 X 73,8 Base Flange with Open Slots	BBE120/74/SS/AP
EI 120/73,8	BOBBIN EI120 X 73,8 Base Flange with Closed Slots (plain)	BBE120/74/SS/CP
Lamination / Stack	EI 150	ASCO Part No
EI 150/49,6	BOBBIN EI150 X 49,6 Base Flange with Open Slots	BBE150/50/SS/AP
EI 150/66,6	BOBBIN EI150 X 66,6 Base Flange with Open Slots	BBE150/67/SS/AP
EI 150/92,6	BOBBIN EI150 X 92,6 Base Flange with Open Slots	BBE150/93/SS/AP

**All bobbins are fully compatible with ALL types of terminals that are currently on sale.
(ASCO/ Phoenix / Wago ...etc)**



CORE BOLT INSULATORS





UNIT 19,
GREEN LANE INDUSTRIAL ESTATE
SECOND AVENUE
BORDESLEY GREEN
BIRMINGHAM
B9 5QP

TEL : 0121 773 3090
FAX : 0121 773 3390

www.ascocomponents.co.uk

NYLON 6 TOP HATS / INSULATING BUSHES.

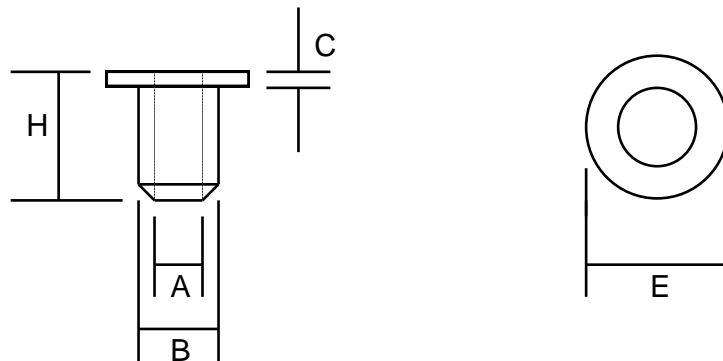
Diameters available:

M4, M5, M6, M8, M10, M12.

DIMENSIONS

(All dimensions in mm)

REF NoA	B	E	C	H	
THM4	4	4.9	10	1.2	5
THM5	5	5.9	12	1.5	6
THM6	6	7.6	14	1.5	7
THM8	8	9.6	19	2.0	11
THM10	10	11.0	21	2.0	14
THM12	12	13.2	25	2.5	17



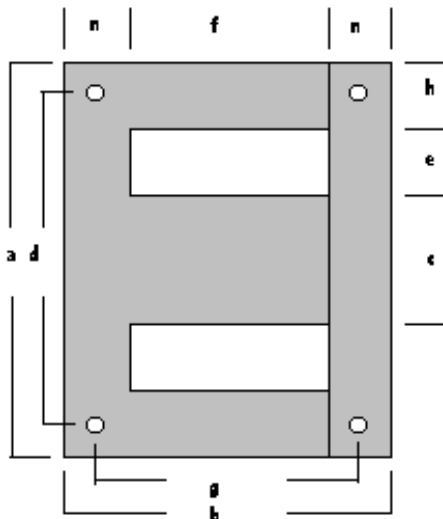
Minimum order quantity is 1,000 of any size.

LAMINATIONS



Single phase EI pattern (LAEI)

Pattern		Hole style	middle leg	external	window	fixing centres	holes	h	n	Weight
International code	ASCO Ref		c	a x b	e x f	d x g				g x10 mm
EI 30	<i>LAEI30</i>	P	10	30X25	5X15			5	5	
EI 33	LAEI33	P	10	33x27	6,5x17	-	-	5	5	.
EI 36	LAEI36	P	12	36x30	6x18	-	-	6	6	65
EI 38	LAEI38	P,X	12,8	38,4x32	6,4X19,2		2,5	6,4	6,4	
EI 41	LAEI41	X	13	41x33	8x21	central hole	3	6	6	
EI 42	LAEI42	A,X	14	42x35	7x21	35x28	3,5	7	7	85
EI 48	LAEI48	A,P,X	16	48x40	8x24	40x32	3,2	8	8	114
EI 54	LAEI54	A,X	18	54x45	9x27	45x36	4	9	9	146
EI 57	LAEI57	A	19	57x47,5	9,5x28,5	47,5x38	3,5	9,5	9,5	162
EI 60	LAEI60	A,X	20	60x50	10x30	50x40	4,2	10	10	185
EI 66	LAEI66	A,X	22	66x55	11x33	55x44	4,5	11	11	210
EI 68	LAEI68	A	22	68x58	12x34	57x46	4,5	11	12	227
EI 75	LAEI75	A	25	75x62,5	12,5x37,5	62,5x50	5	12,5	12,5	283
EI 78	LAEI78	A	26	76x65	13x39	65x52	4,5	13	13	
EI 84	LAEI84	A	28	84x70	14x42	70x56	4,5	14	14	320
EI 90	LAEI90	A	30	90x75	15x45	75x60	4,5	15	15	
EI 96	LAEI96	A	32	96x80	16x48	80x66	5,5 (6)	16	16	465
EI 105	LAEI105	A	35	105x87,5	17,5x52,5	87,5x70	5,5	17,5	17,5	
EI 108	LAEI108	A	36	108x90	18x54	90x72	5,5	18	18	580
EI 120	LAEI120	A	40	120x100	20x60	100x80	7 (6,6)	20	20	715
EI 126	LAEI126	A	42	126x105	21x63	105x84	6,5	20	20	715
EI 135	LAEI135	A	45	135x112,5	22,5x67,5	112,5x90	8 (7,5)	22,5	22,5	920
EI 150	LAEI150	A	50	150x125	25x75	125x100	8	25	25	1.060
EI 180	LAEI180	A	60	180x150	30x90	150x120	9,5(8,5)	30	30	1.650
EI 192	LAEI192	A	64	192x160	32x96	160x128	9,5	32	32	1.870
EI 240	LAEI240	A	80	240x200	40x120	200x160	11,5	40	40	2.940
EI 250	LAEI250	A	80	250x215	45x125	220x185	11	40	45	3.230
EI 300	LAEI300	A	100	300x250	50x150	250x200	13	50	50	4.600

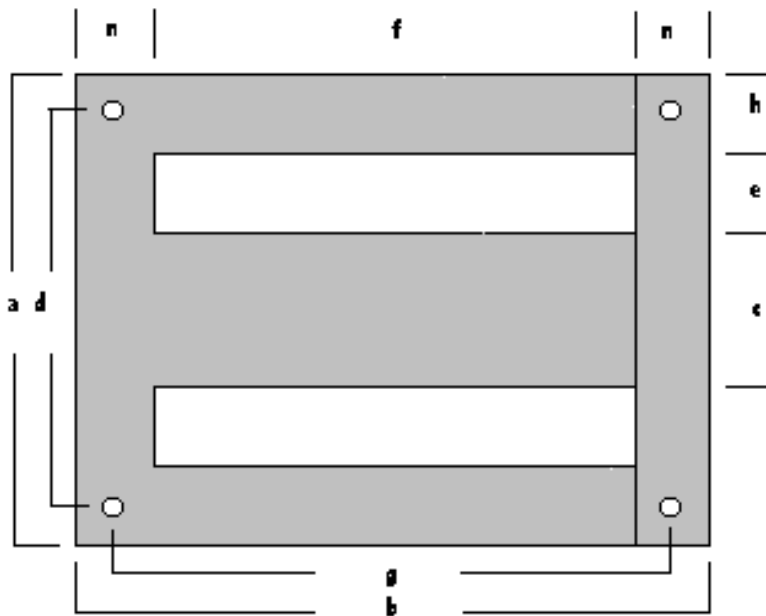


Hole Styles Refs:

- P = Plain – (no holes)
- X = Central Wire Hole
- A = 4 Holes – one at each corner

Single phase EI extended (LAMA)

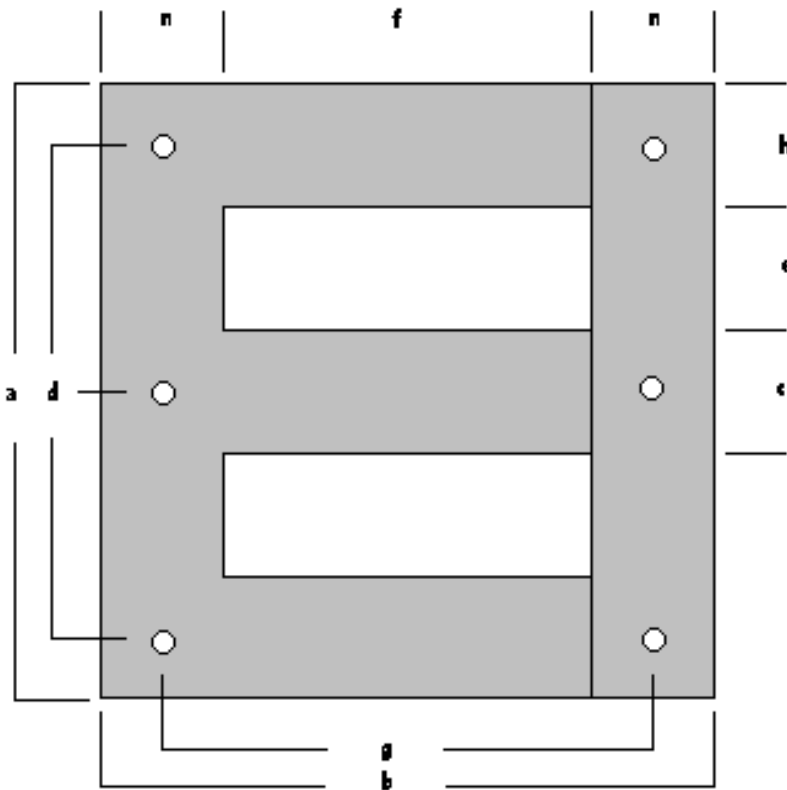
Pattern		Hole Style	middle leg	external	window	fixing centres	holes	h	n	Weight
International code	ASCO Ref		c	a x b	e x f	d x g				g x10 mm
EI 120/160	LAMA120	A	40	120x160	20x120	100x140	7	20	20	1.085
EI 150/200	LAMA150	A	50	150x200	25x150	125x175	8,5	25	25	1.690
EI 192/256	LAMA192	A	64	192x256	32x192	160x224	10	32	32	2.810
EI 220/240	LAMA220	A	70	220X240	40X160	185X200	9	35	40	3.050
EI 240/320	LAMA240	A	80	240x320	40x240	200x220	11,5	40	40	4.240
EI 300/400	LAMA300	A	100	300x400	50x300	250x350	13	50	50	6.960



Hole Styles Refs:
 A = 4 Holes – one at each corner

Three phase EI pattern DIN 41302 (LA3UI)

Pattern		Hole Style	leg width	external	window	fixing centres	holes	h	n	Weight
International code	ASCO Ref		c	a x b	e x f	d x g				g x10 mm
EI 80/80	LA3UI48	A	16	80x80	16x48	64x64	4,5	16	16	450
EI 100/100	LA3UI60	A	20	100x100	20x60	80x80	5,5	20	20	580
EI 125/125	LA3UI75	A	25	125x125	25x75	100x100	5,5	25	25	905
EI 150/150	LA3UI90	A	30	150x150	30x90	120x120	8,5	30	30	1.300
EI 200/200	LA3UI120	A	40	200x200	40x120	160x160	11	40	40	2.450
EI 250/250	LA3UI150	A	50	250x250	50x150	200x200	11,5	50	50	3.800
EI 300/300	LA3UI180	A	60	300x300	60x180	240x240	13	60	60	5.450
EI 350/350	LA3UI210	A	70	350x350	70x210	280x280	13	70	70	7.400
EI 400/400	LA3UI240	A	80	400x400	80x240	320x320	14,5	80	80	9.660
EI 450/450	LA3UI270	A	90	450x450	90x270	360x360	14	90	90	11.100
EI 500/500	LA3UI300	A	100	500x500	100x300	400x400	16	100	100	14.714

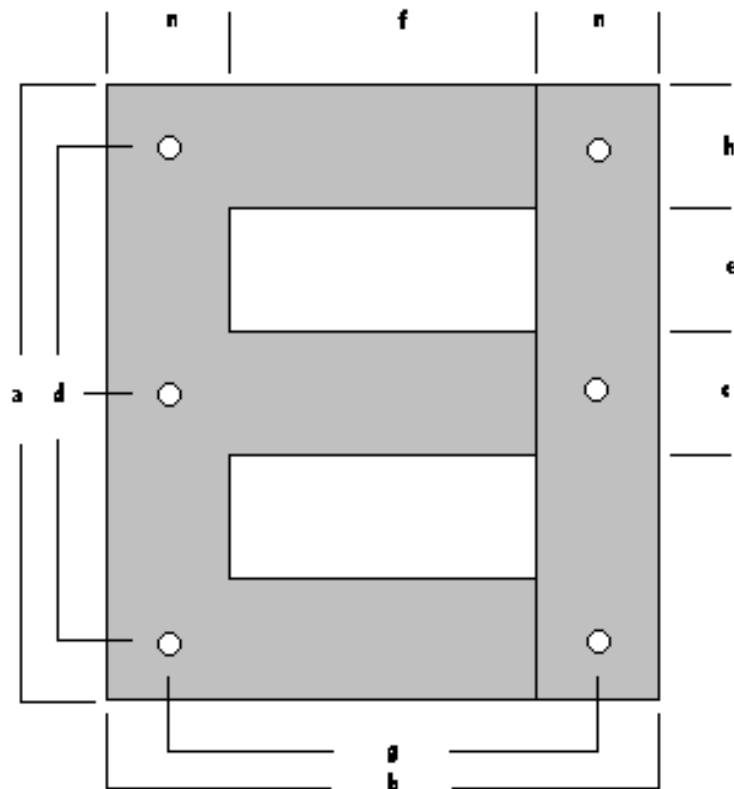


Hole Styles Refs:

A = 4 Holes – one at each corner

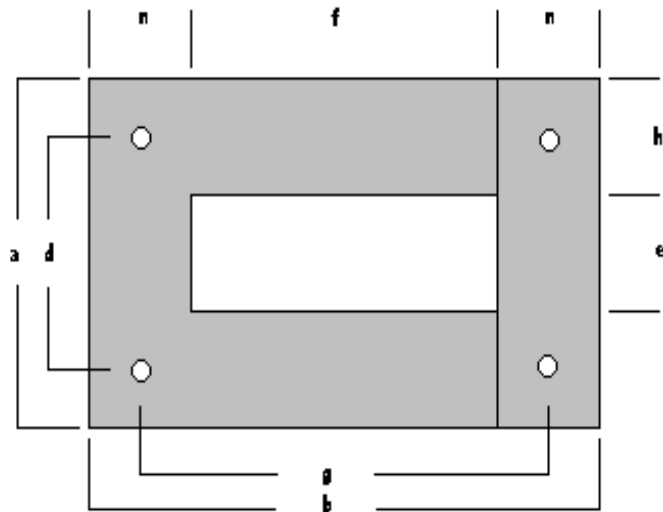
Three phase EI pattern (short leg) (LATC)

Pattern		Hole style	middle leg	external	window	fixing centres	holes	h	n	Weight
International code	ASCO Ref		c	a x b	e x f	d x g				g x10 mm
EI 200/180	LATC200	6 hole	40	200x180	40x100	160x140	10	40	40	2.130
EI 225/202,5	LATC225	6 hole	45	225x202,5	45x112,5	180x157,5	10	45	45	2.700
EI 250/225	LATC250	6 hole	50	250x225	50x125	200x175	10	50	50	3.325
EI 300/270	LATC300	6 hole	60	300x270	60x150	240x210	12	60	60	4.790
EI 350/315	LATC350	6 hole	70	350x315	70x175	280x245	13	70	70	6.520
EI 400/360	LATC400	6 hole	80	400x360	80x200	320x280	13	80	80	8.520
EI 450/405	LATC450	6 hole	90	450x405	90x225	360x325	15	90	90	10.780
EI 500/450	LATC500	6 hole	100	500x450	100x250	400x350	17	100	100	13.310



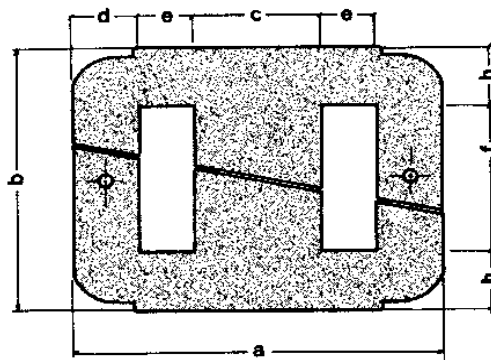
Single phase UI pattern (UI)

Pattern		Hole Style	middle leg	external	window	fixing centres	holes	h	n	Weight
International code	ASCO Ref		c	a x b	e x f	d x g				g x10 mm
UI 30	LAUI30	4 hole	10	30x50	10x30	20x40	3,5	-	10	92
UI 39	LAUI39	4 hole	13	39x65	13x39	26x52	3,5	-	13	155
UI 48	LAUI48	4 hole	16	48x80	16x48	32x64	4,5	-	16	235
UI 60	LAUI60	4 hole	20	60x100	20x60	40x80	4,5	-	20	365
UI 75	LAUI75	4 hole	25	75x125	25x75	50x100	5,5	-	25	575
UI 90	LAUI90	4 hole	30	90x150	30x90	60x120	6,5	-	30	830
UI 120	LAUI120	4 hole	40	120x200	40x120	80x160	8,5	-	40	1.450
UI 150	LAUI150	4 hole	50	150x250	50x150	100x200	11	-	50	2.300
UI 180	LAUI180	4 hole	60	180x300	60x180	120x240	11	-	60	3.300
UI 210	LAUI210	4 hole	70	210x350	70x210	140x280	13	-	70	4.500
UI 240	LAUI240	4 hole	80	240x400	80x240	160x320	13	-	80	5.910

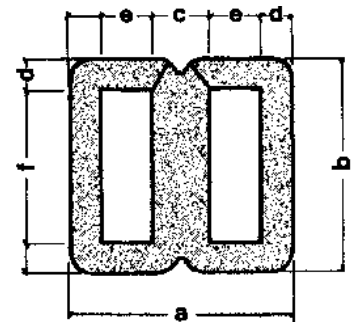


Single phase Special (MS)

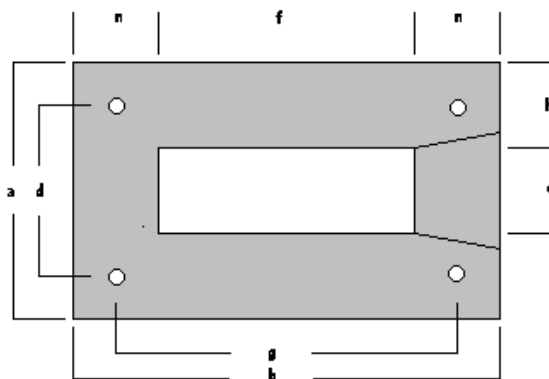
Pattern		Hole style	middle leg	overall	window	fixing centres	holes	h	n	Weight
Ref No	ASCO Ref		c	a x b	e x f	d x g				g x10 mm
262	MS262	P	6,35 (.250)	25,40x19,05 (1.000x0.750)	6,35x12,70 (.250x.500)	-	-	3,175 (.125)	6,350 (.250)	
621	MS621	X	11,100 (.437)	34,112x26,556 (1.343x1.0455)	6,756x17,056 (.266x.6715)	central hole centre hole	2 x 2,5 (.098)	4,750 (.187)	4,750 (.187)	
573	MS573	A	34,925 (1.375)	133,35x146,05 (5.250x5.750)	26,9875x101,60 (1.0625x4.000)	111,125x123,825 (4.375x4.875)	4 x 7,14 (.281)	22,225 (.875)	22,225 (.875)	
181	MS181	P	63,50 (2.500)	234,95x273,05 (9.250x10.750)	53,98x209,1 (2.125x8.250)	-	-	31,75 (1.250)	31,75 (1.250)	
EI 130	MS130	A	35	130x105	30x70	105x89	7	17,5	17,5	670
EI 254	MS254	A	84	254x212	42,5x127	211,5x169,5	11	42,5	42,5	
UI 190	US254	A	63,5	190,5x254	63,5x127			63,5	63,5	
	EE078		26	78x59	13x34	66	4	13	12,5	280
	MS041		10	41x41	10,5x31			5		77
	MS030		10	30x125	5x115			5		198



EE078



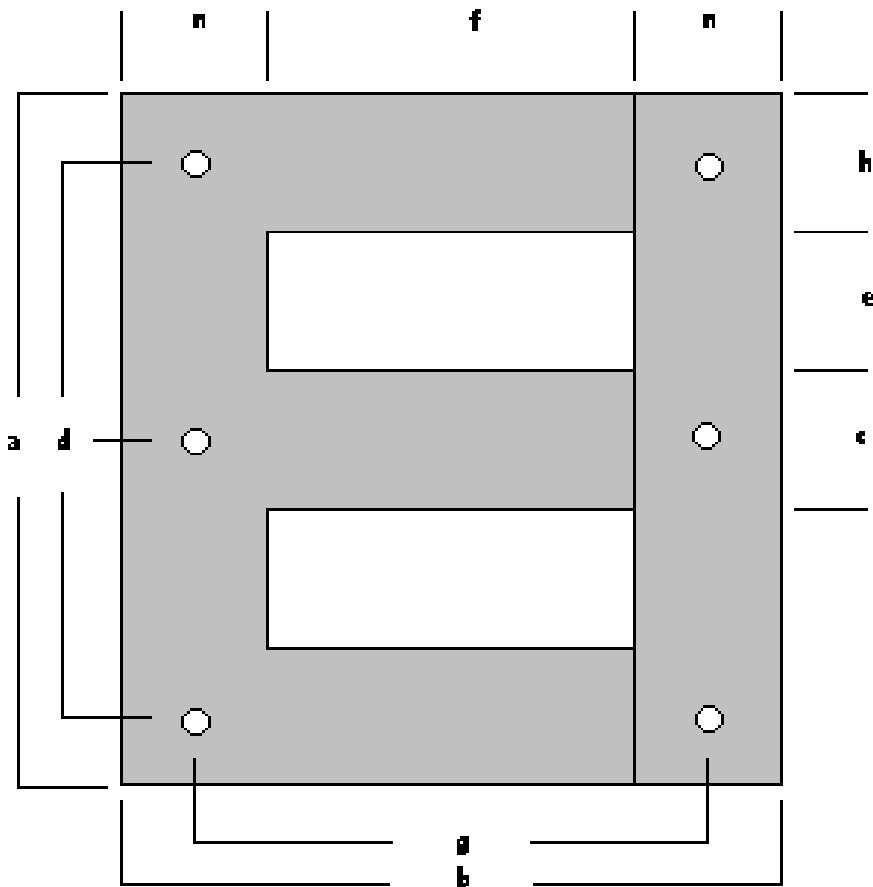
MS041, MS030



US254

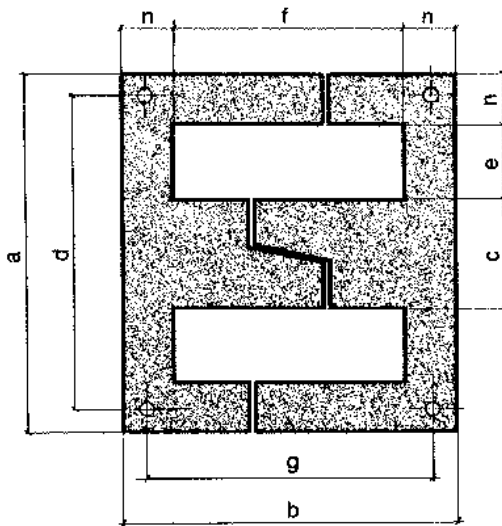
Three phase Special (MS)

Pattern		sagoma Pattern	middle leg	overall	window	fixing centres	holes	h	n	Weight
Ref No	ASCO Ref		c	a x b	e x f	d x g				g x10 mm
	TS110	A	23	110x120	20,5x68	87x94	7	23	26	
100A	LAUK100A	A	50,8 (2.000)	254x228,6 (10.000x9.000)	50,8x127 (2.000x5.000)	203,2x193,675 (8.000x7.625)	4 x 11,112 (.4375)	50,80 (2.000)	50,8 (2.000)	
221A	LAUK221A	A	63,50 (2.500)	317,50x285,75 (12.500x11.250)	63,50x158,24 (2.500x6.300)	280,32x248,57 (11.036x9,786)	6 x 10,312 (.406)	63,50 (2.500)	63,50 (2.500)	
175A	LAUK175A	A	88,90 (3.500)	444,50x400,05 (17.500x15,750)	88,90x222,25 (3.500x8.750)	185,06+37,18+185,06x362,85 (7.2858+1.4638+7.2858x14.285)	8 x 10,312 (.406)	88,90 (3.500)	88,90 (3.500)	



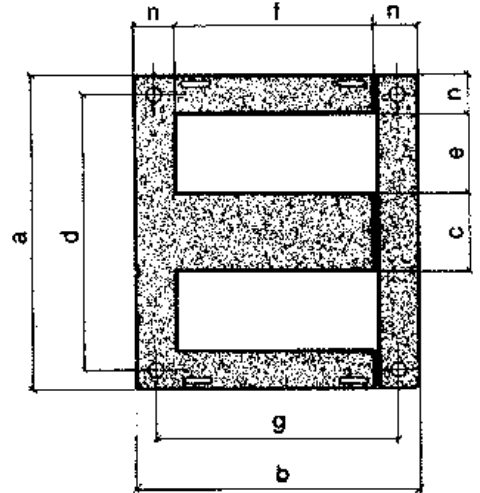
Laminations for welding machines (EE, EI)

Pattern	middle leg	external	window	fixing centres	holes	h	n	Weight
ASCO Ref	c	a x b	e x f	d x g				g x10 mm
EE134	60	196x173	40x117	171x147	7,5	28	28	1.880
EE163	70	230x210	45x140	195x175	8,5	35	35	2.760
EI176	40	160x136	40x96	140x116	7	20	20	1.040



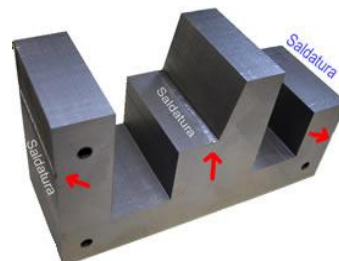
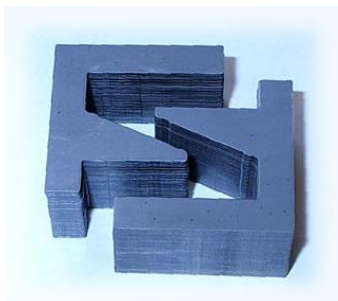
Pattern (MI)

external	window
a x b	e x f
30X25	5x1
38,4x32	6,4x1



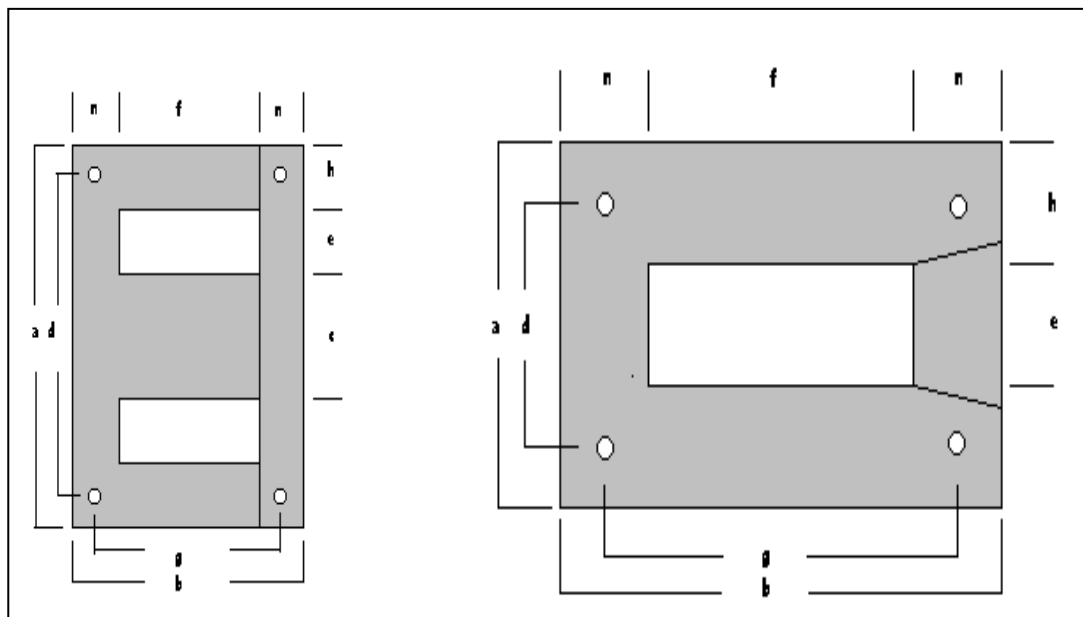
Welded Cores "TrafoWeld" pattern (TW)

Pattern	leg	External complete core	window	Weight
ASCO Ref	c	a x b	e x f	g x10 mm
TW163	70	230x210x?	45x140	



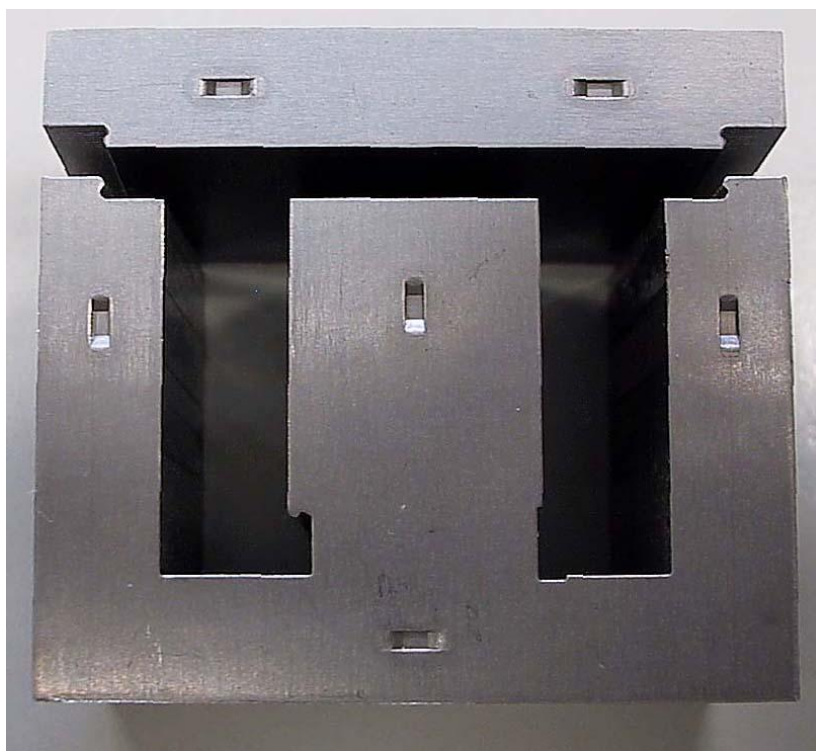
Single phase UK pattern (UK)

Pattern		Hole style	middle leg	overall	window	fixing centres	holes	h	n	Weight
UK code	ASCO Ref		c	a x b	e x f	d x g				g x10 mm
18	LAUK18		14,287 (.563)	42,875x35,719 (1.688x1.406)	7,144x21,4375 (.281x.844)	Centre hole	2,5 (.098)	7,144 (.281)	7,144 (.281)	
35	LAUK35	A,N,H2	19,05 (.750)	57,15x47,625 (2.250x1.875)	9,525x28,575 (.375x1.125)	See individual sheet	See individual sheet	9,525 (.375)	9,525 (.375)	
147	LAUK147	A,N,AN	22,226 (.875)	66,675x55,562 (2.625x2.1875)	11,112x33,337 (.4375x1.750)	See individual sheet	See individual sheet	11,112 (.4375)	11,112 (.4375)	
29	LAUK29	A,N,AN	25,4 (1.000)	76,2x63,5 (3.000x2.500)	12,7x38,1 (.500x1.500)	See individual sheet	See individual sheet	12,7 (.500)	12,7 (.500)	
196	LAUK196	A,N,AN	28,575 (.5625)	85,72x71,44 (3.375x2.8125)	14,29x42,86 (.5625x1.6875)	See individual sheet	See individual sheet	14,29 (.5625)	14,29 (.5625)	
78	LAUK78	A,N,AN	31,75 (1.250)	95,25x79,375 (3.750x3.125)	15,875x47,625 (.625x1.875)	See individual sheet	See individual sheet	15,875 (.625)	15,875 (.625)	
152	LAUK152	A	34,925 (1.375)	104,775x87,3125 (4.125x3.4375)	17,4625x52,3875 (.6875x2.0625)	87,3125x69,85 (3.4375x2.750)	4 x 5,5 mm (.2165)	17,4625 (.6875)	17,4625 (.6875)	
120	LAUK120	A,N,AN,R ,T,S.8558	38,1 (1.500)	114,3x95,25 (4.500x3.750)	19,05x57,15 (.750x2.250)	See individual sheet	See individual sheet	19,05 (.750)	19,05 (.750)	
248	LAUK248	A,7,8,9	44,45 (1.750)	133,35x111,125 (5.250x4.375)	22,225x66,675 (.875x2.625)	See individual sheet	See individual sheet	22,225 (.875)	22,225 (.875)	
638	LAUK638	A	54 (2.125)	161,93x138,105 (6.375x5.312)	26,98x80,96 (1.0625x3.1875)	134,94x107,95 (5.3125x4.250)	6 x 7,938 (.3125)	26,98 (1.0625)	26,98 (1.0625)	
750	LAUK750	A	63,5 (2.500)	190,05x158,75 (7.500x6.250)	31,75x95,25 (1.250x3.750)	158,75x127 (6.250x5.000)	6 x 9,525 (.375)	31,75 (1.250)	31,75 (1.250)	
825	LAUK825	A	69,85 (2.750)	209,55x174,625 (8.250x6.875)	34,925x104,775 (1.375x4.125)	See individual sheet	8 x 7,9375 (.3125)	34,925 (1.375)	34,925 (1.375)	
9	LAUK009	A	76,2 (3.000)	228,6x190,5 (9.000x7.500)	38,1x114,3 (1.500x4.500)	190,5x152,4 (7.500x6.000)	6 x 9,525 (.375)	38,1 (1.500)	38,1 (1.500)	
217	LAUK217	A	88,90 (3.500)	266,7x222,3 (10.500x8.750)	44,45x133,35 (1.750x5.250)	241,30x196,9 (7.500x6.000)	4 x 10,32mm (.406)	44,45 (1.750)	44,45 (1.750)	
135	LAUK135	A	114,3 (4.500)	342,90x228,6 (13.500x11.250)	57,15x171,45 (2.250x6.750)	See individual sheet	8 x 11,11mm (.4375)	57,15 (2.250)	57,15 (2.250)	

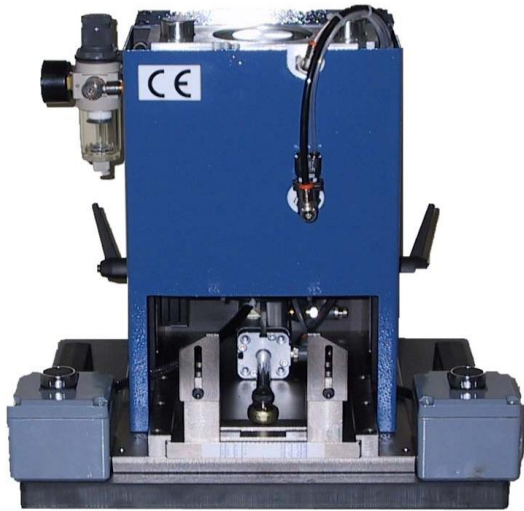


Trafopacket (TP) system

CODE	RE. TO DIN41302	CTR.LIMB	OVERALL	WINDOW	HOLES DIAM.	g x 10 mm
TP048	EI 48	16	48 x 40	8 x 24	-	114
TP060	EI 60	20	60 x 50	10 x 30	4 x 3,5	185
TP075	EI 75	25	75 x 62,5	12,5 x 37,5	4 x 4,5	283
TP084	EI 84	28	84 x 70	14 x 42	4 x 4,5	320
TP096	EI 96	32	96 x 80	18 x 48	4 x 5,5	465



The stack height is completely customizable



A cost effective solution for TP TrafoPacket stack assembling.

Lamination capacity EI48 to EI84.

E and I stacks are loaded manually and fastened vertically.

The machine is **completely pneumatic** and does not require any electric supply.

A two button control system ensures operator safety

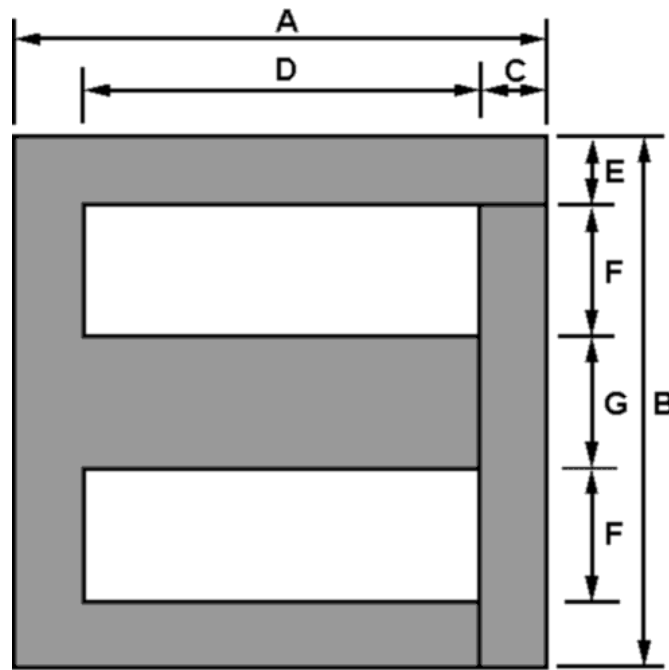


LINTON AND HIRST SILICON TOOL LAMINATIONS

A full range of Linton and Hirst silicon laminations are available. Details are below. Standard stock of laminations is non-annealed, however annealed laminations are also available upon request.

We can offer a variety of grades. Standard stock patterns are available in three main grades: 530/50 – 400/50 – M635. For other grades please call us to discuss your requirements.

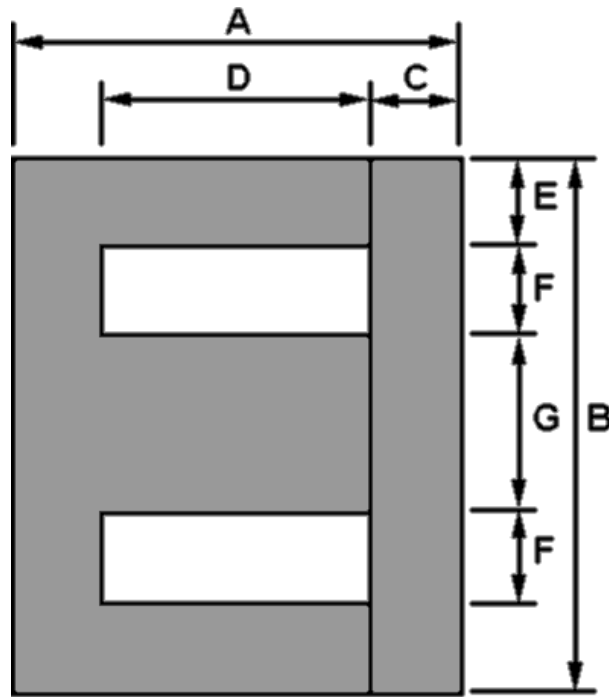
Electrical Steel Laminations UNILAM patterns



Part No.	A	B	C	D	E	F	G	H/N (1)	Core Area	Path length	Window area	Weight sq. stk.	Gauge Avail
-	mm	mm	mm	mm	mm	mm	mm	-	cm ²	cm	cm ²	Kg	mm
19	76	76	9.5	57	9.5	19	19	H	3.61	19.9	10.8	0.525	0.35, 0.5
28	112	112	14	84	14	28	28	H	7.84	29.4	23.5	1.69	0.35, 0.5
35	140	140	17.5	105	17.5	35	35	H	12.3	36.8	36.8	3.30	0.35, 0.5
44	176	176	22	132	22	44	44	H	19.4	46.2	58.1	6.56	0.35, 0.5
54	216	216	27	162	27	54	54	H	29.2	56.7	87.5	12.2	0.35, 0.5
64	256	256	32	192	32	64	64	H	41.0	67.2	123	20.2	0.35, 0.5

(1) Available with holes (H) or notches (N); contact Sales for sizes and location

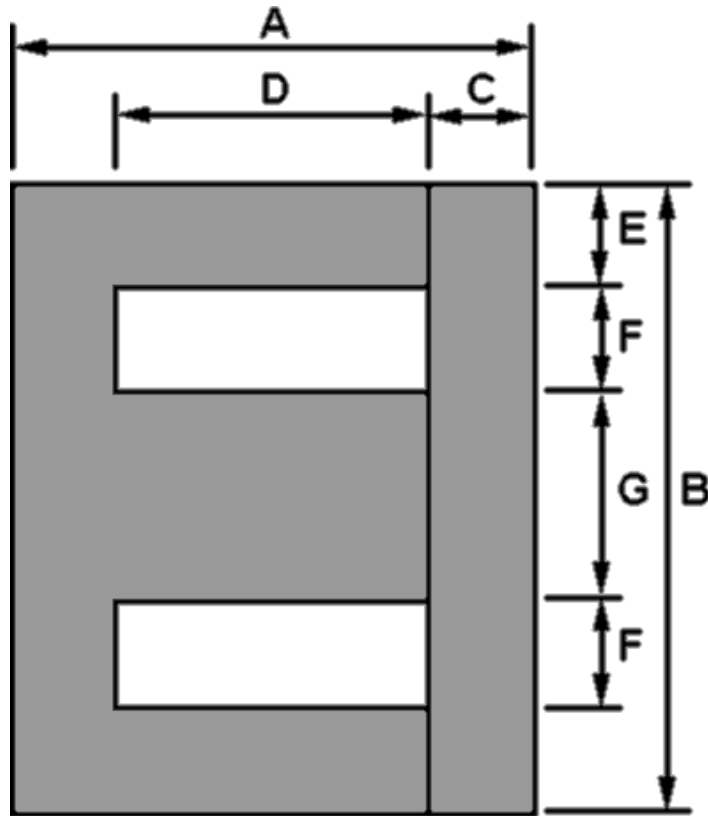
Electrical Steel Laminations - Imperial patterns



Part No.	A	B	C	D	E	F	G	H/N (1)	Core Area	Path length	Window area	Weight sq. stk.	Gauge Avail	US Part No.
-	mm	mm	mm	mm	mm	mm	mm	-	cm ²	cm	cm ²	Kg	mm	-
18	35.7	42.9	7.14	21.4	7.14	7.14	14.3	H	2.04	8.57	1.53	0.136	0.35	-
35	47.6	57.2	9.53	28.6	9.53	9.53	19.1	H,N	3.63	11.4	2.72	0.318	0.35, 0.5	75EI
147	55.6	66.7	11.1	33.3	11.1	11.1	22.2	H,N	4.94	13.3	3.70	0.508	0.35, 0.5	87EI
29	63.5	76.2	12.7	38.1	12.7	12.7	25.4	H,N	6.45	15.2	4.84	0.745	0.35	100EI
196	71.4	85.7	14.3	42.9	14.3	14.3	28.6	H,N	8.16	17.1	6.13	1.00	0.35, 0.5	112EI
78	79.4	95.3	15.9	47.6	15.9	15.9	31.8	H,N	10.1	19.1	7.56	1.46	0.35, 0.5	125EI
120	95.3	114	19.1	57.2	19.1	19.1	38.1	H,N	14.5	22.9	10.9	2.53	0.35, 0.5	150EI
248	111	133	22.2	66.7	22.2	22.2	44.5	H	19.8	26.7	14.8	4.08	0.35, 0.5, 0.65	175EI
638	135	162	27.0	81.0	27.0	27.0	54.0	H	29.2	32.4	21.8	7.28	0.35, 0.5	212EI
750	159	191	31.8	95.3	31.8	31.8	63.5	H	40.3	38.1	30.2	11.9	0.5	250EI
825	175	216	34.9	105	34.9	34.9	69.9	H	48.8	41.9	41.8	15.8	0.35, 0.5	-
9	191	229	38.1	114	38.1	38.1	76.2	H	58.1	45.7	43.5	20.3	0.35, 0.5	3EI
135	286	343	57.2	171	57.2	57.2	114	H	131	68.6	98.0	68.5	0.35, 0.5	-

(1) Available with holes (H) or notches (N); contact Sales for sizes and location.

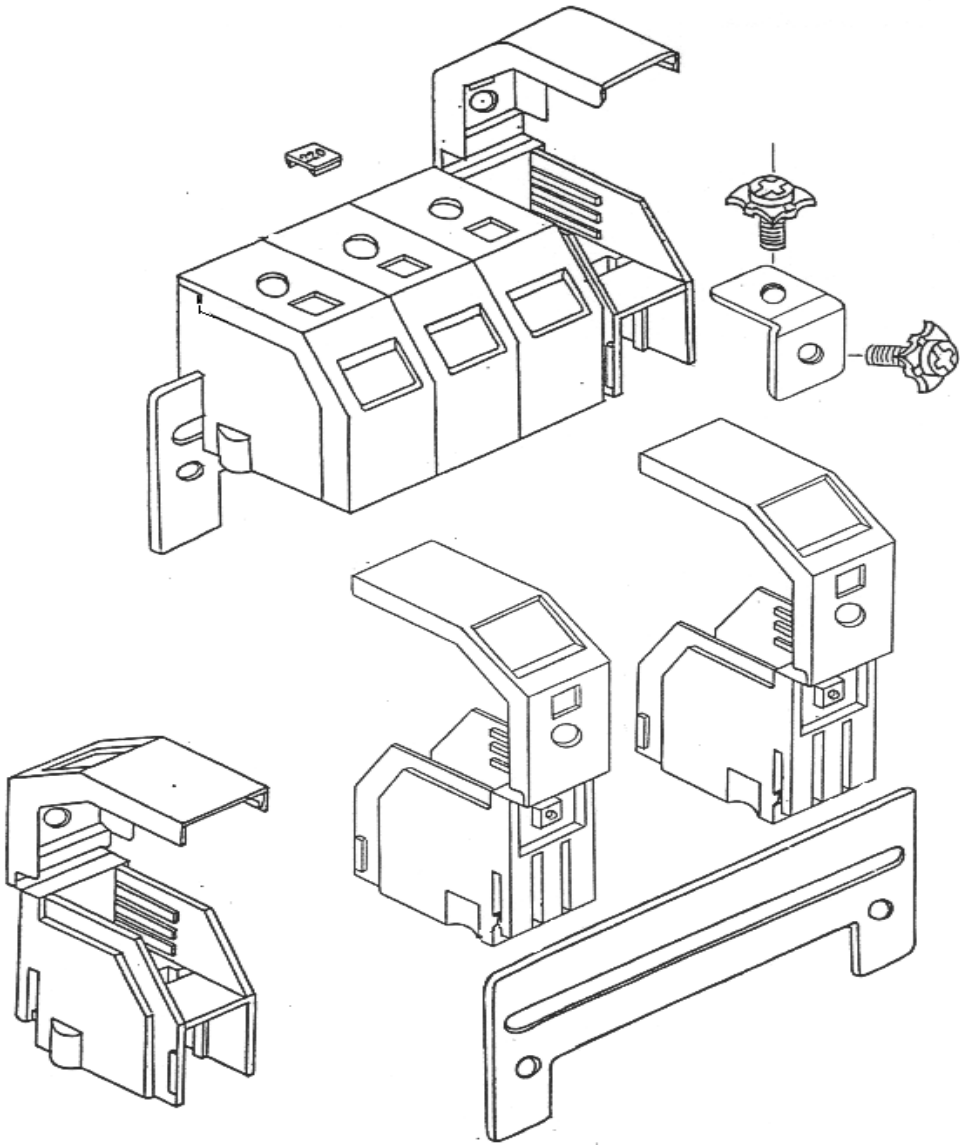
Electrical Steel Laminations - Other patterns



Part No.	A	B	C	D	E	F	G	H/N (1)	Core Area	Path length	Window area	Weight sq. stk.	Gauge Avail	US Part No.
218	15.8	19.1	2.36	11.1	2.36	4.75	4.76	-	0.227	4.13	0.528	0.007	0.35	187EI
262	19	25.4	3.18	12.7	3.18	6.35	6.35	-	0.403	5.08	0.806	0.016	0.35	25EI
250	28.6	34.9	4.76	19.1	4.76	7.94	9.53	H	0.907	7.30	1.51	0.052	0.35, 0.5	375EI
39	34.9	41.3	4.35	22.2	4.35	9.53	9.53	-	0.907	8.92	2.12	0.076	0.35, 0.5	-
621	26.6	34.1	4.75	17.1	4.75	6.76	11.1	H	1.23	6.67	1.15	0.057	0.35	-
641	184	216	31.8	121	31.8	44.5	63.5	H	40.3	45.7	53.6	14.2	0.35, 0.5	-
122	279	241	38.1	203	38.1	44.5	76.2	H	58.1	63.5	90.3	29.0	0.5	-

(1) Available with holes (H) or notches (N); contact Sales for sizes and location

RAIL MOUNTED TRANSFORMER TERMINALS



TERMINAL BLOCK AND RAIL ASSEMBLY DETAILS

A range of rail mounting terminal blocks is supplied by ASCO Components. These comprise of the following variations:

- 8 pole 30 Amp connector with terminal shroud. Mounted by 3 fixing screws through a standard bracket. Produced in 30 % glass filled Nylon. Produced in brown only.
- 2 pole and 3 pole 15 Amp and 30 Amp rail mounted 'snap on' terminals with fingerproof shrouds. Supplied with voltage marking tabs. The standard colour supplied is orange. Produced in polyamide 6.6 and conforming to UL 94 V2.
- 1 pole 63 Amp rail mounted 'snap on' terminal with fingerproof shrouds. Supplied with voltage marking tabs. The standard colour supplied is orange. Produced in polyamide 6.6 and conforming to UL 94 V2.

Contact arrangements for 15A and 30A terminals:

Transformer side - open ended hook
Customer side - screw and washer

Maximum wire size - 15A - 2.5mm SQ
- 30A - 4.0mm SQ

Contact arrangement for 63A terminal:

Transformer side - screw and washer
Customer side - screw and washer

Contact arrangement for 200A and 400A terminal:

Both connections by way of nut and thread with clamping washers

Dimensioned drawings for terminals are available upon request.

New!! Available July 2007



30A single pole fused transformer terminals. UL/VDE approvals. Fits onto ASCO 'Speedfix' system.

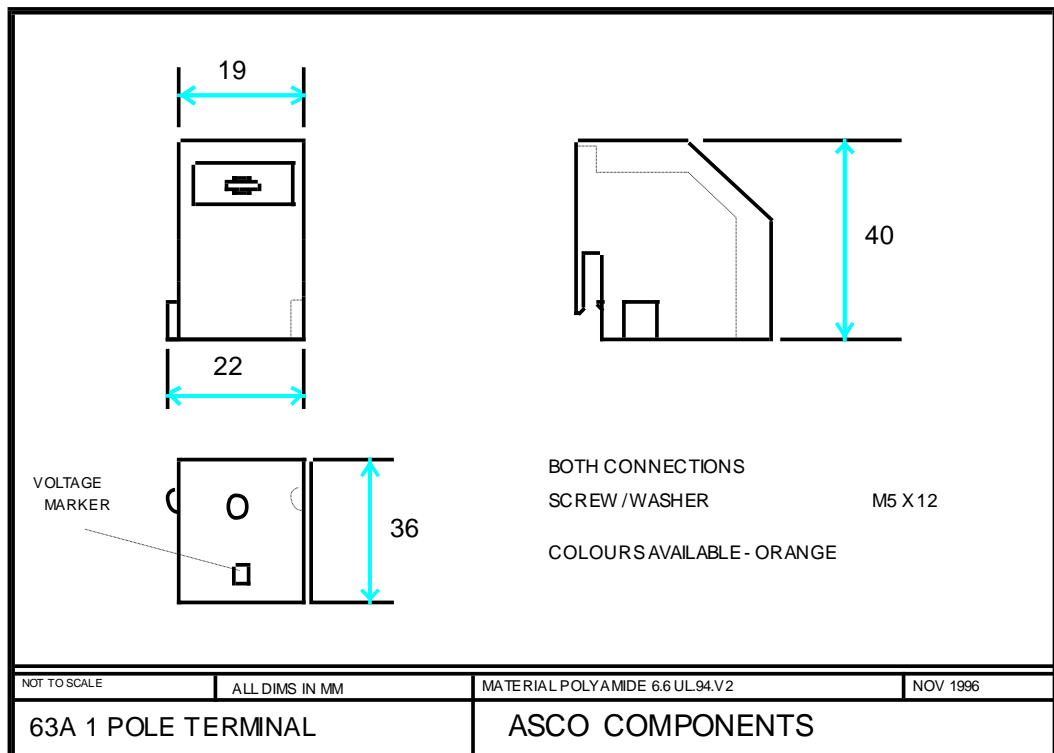
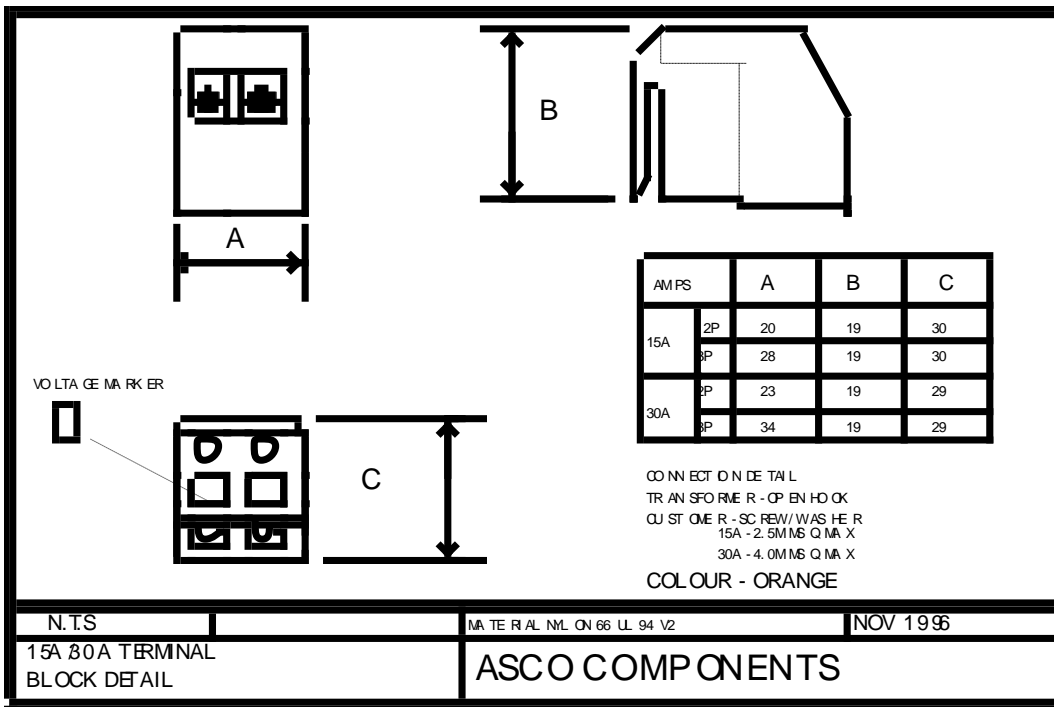


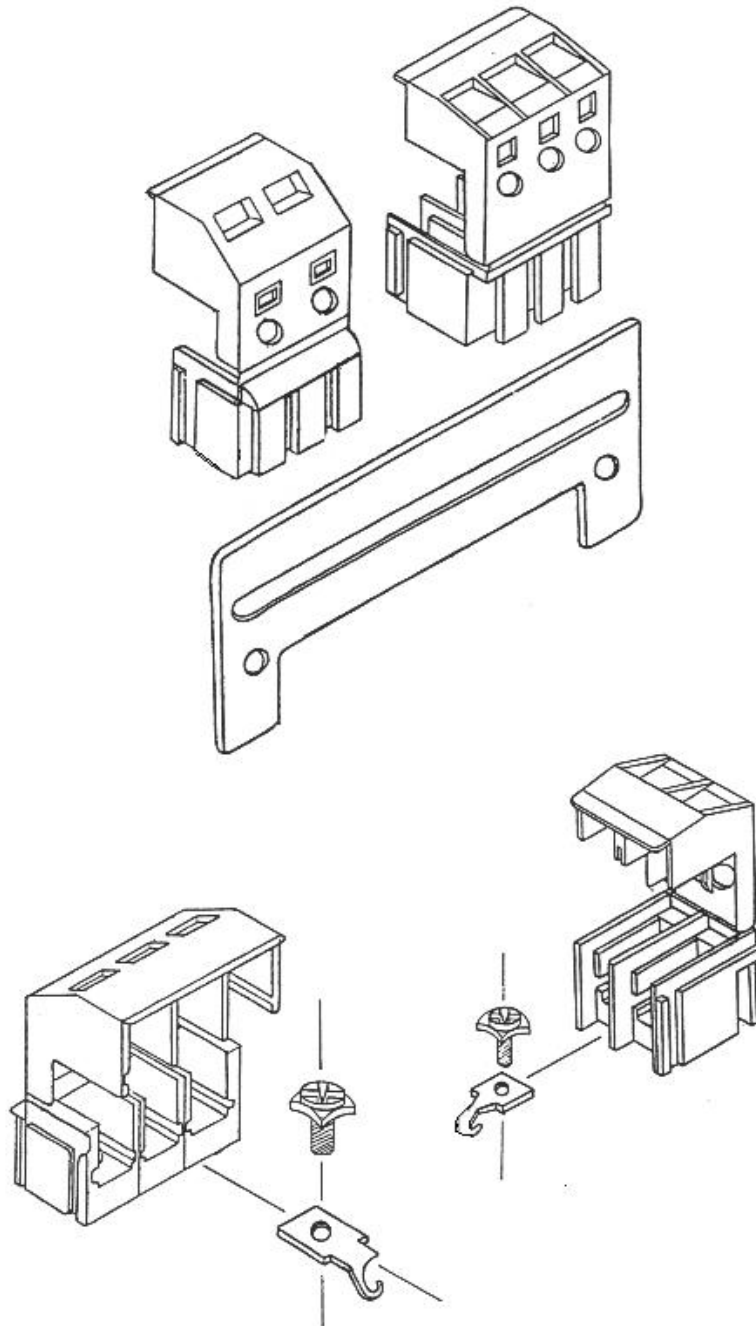
VOLTAGE AND CURRENT SPECIFICATIONS

Terminal Type	ASCO Ref.	Colour	Max Voltage (V)	Max Current (A)	Max Wire size (c.s.a / mm)
15 amp 2 pole	CB02/15	Orange	550v	15A	2.5mm
15 amp 3 pole	CB03/15	Orange	550v	15A	2.5mm
30 amp 2 pole	CB02/30	Orange	650v	30A	4.0mm
30 amp 3 pole	CB03/30	Orange	650v	30A	4.0mm
63 amp 1 pole	CB01/63	Orange	1000v	63A	10.0mm
200 amp 1 pole	CB01/200	Grey	Please call our office for more details		
400 amp 1 pole	CB01/400	Grey	Please call our office for more details		

This information is supplied for guidance purposes only. Users of these terminals must satisfy themselves that each terminal is suitable for the purpose for which it will be applied

Dimension details for ASCO Transformer Terminal Blocks

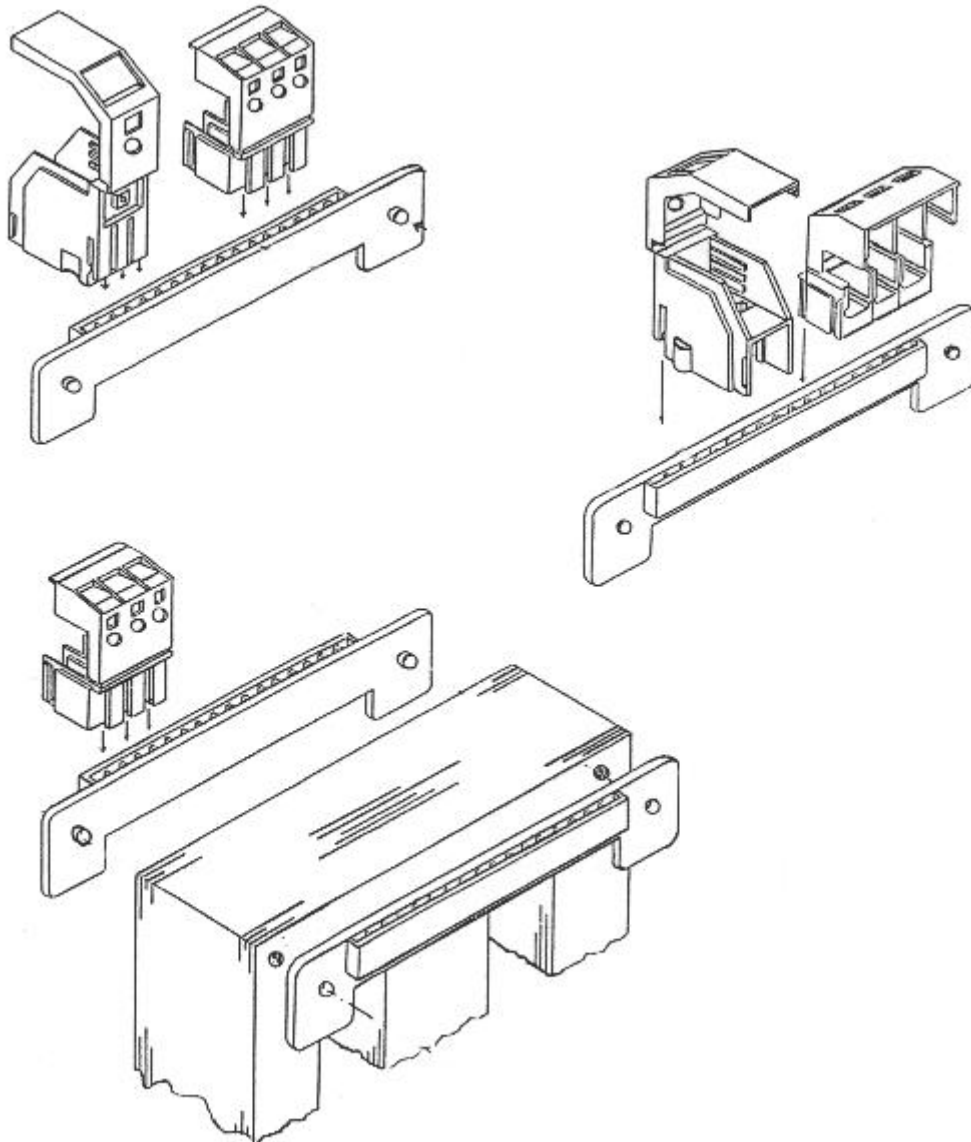




Rail mounting bracket sets are also available for the following metric lamination sizes:

EI 75, EI 96, EI 108, EI 120 & EI 150.

Also available are a range of **Nylon terminal bars** to suit EI75, EI84, EI96, EI120 and EI150N. These have a number of locator pockets moulded into the back of the rail to stop any sideways movement of the terminal block once it is fitted into place. There is also a guide incorporated into the rail to allow for perfect alignment with the lamination.



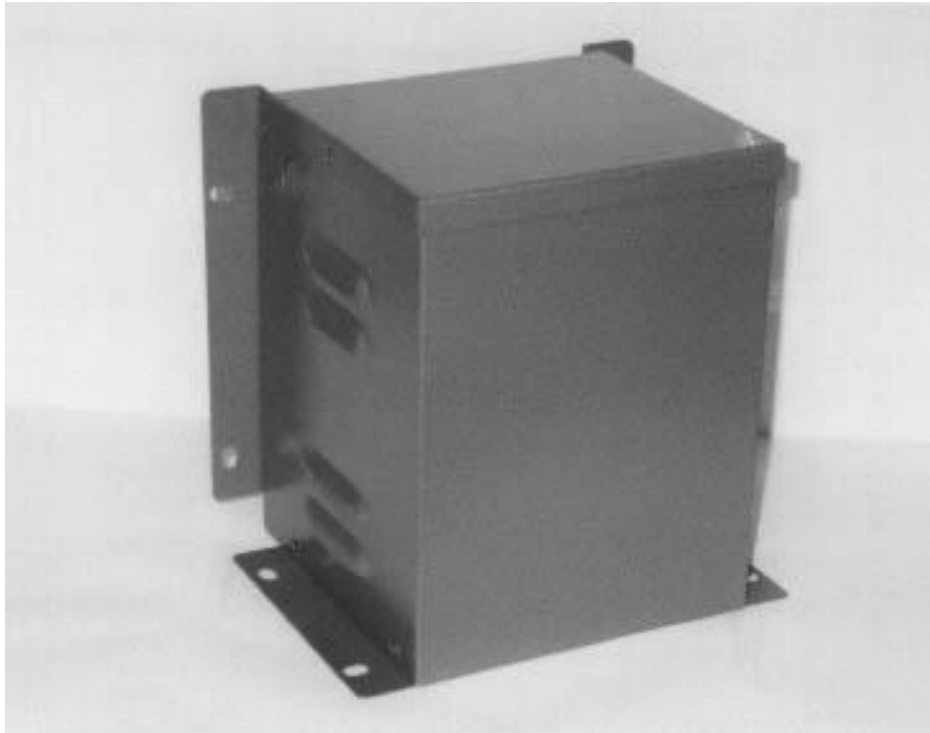
In addition to the rail-mounting version, standard angles can be provided where transformers require terminations other than rail mounted types.

Sizes available in standard angles are:

EI75, EI84, EI96, EI108, EI120, EI150 & EI180.

ASCO Components can also supply a range of three phase angles to suit standard DIN type laminations. Please refer to the frames/angles section of the catalogue for more details.

WALL / FLOOR MOUNTED ENCLOSURES





UNIT 19,
GREEN LANE INDUSTRIAL ESTATE
SECOND AVENUE
BORDESLEY GREEN
BIRMINGHAM
B9 5QP

TEL : 0121 773 3090
FAX : 0121 773 3390

www.ascocomponents.co.uk

THE 'SP' RANGE OF FLOOR AND WALL MOUNTING ENCLOSURES

FEATURES INCLUDE :

A FULL RANGE OF SIZES FROM 1 TO 7

LOUVRED SIDE PANELS

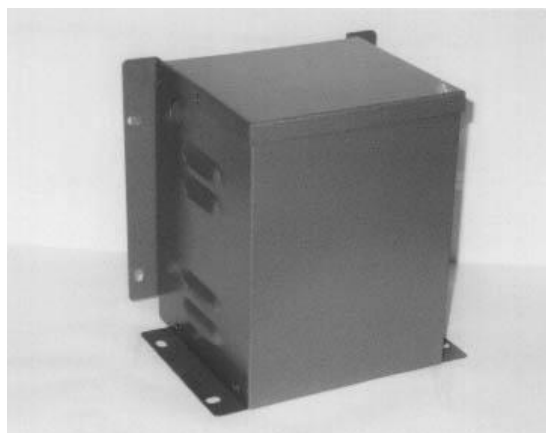
STANDARD FINISH HAMMER GREY POWDER COAT

IP21 PROTECTION

PRODUCED IN ZINTEC AS STANDARD

RADIUSED CORNERS AS A SAFETY FEATURE

EX STOCK FROM ASCO'S BIRMINGHAM WAREHOUSE



'SP' RANGE INTERNAL DIMENSIONS

CASE REFERENCE	INTERNAL DIMENSIONS (mm)		
	WIDTH	HEIGHT	DEPTH
SP1	127	168	93
SP2	150	197	126
SP3	175	225	157
SP4	240	257	197
SP5	275	328	238
SP6	307	430	287
SP7	348	430	310

'SP' RANGE EXTERNAL DIMENSIONS

CASE REFERENCE	EXTERNAL DIMENSIONS (mm)		
	WIDTH	HEIGHT	DEPTH
SP1	190	190	118
SP2	209	218	150
SP3	240	250	182
SP4	300	280	220
SP5	335	355	260
SP6	365	455	310
SP7	407	455	335

July 1999 Issue 3.

'TP' RANGE ENCLOSURE DIMENSIONS (internal)

REF	CABLE ENTRY TYPE	WIDTH (W)		DEPTH (D)		HEIGHT (H)		SKID (C)	
		INS.	MM.	INS.	MM.	INS.	MM.	INS.	MM.
TP2-5	C	15 ³ / ₄	400	8	200	15 ³ / ₄	400	4 ¹ / ₄	106
TP3-6	G	17 ³ / ₄	450	12	300	19 ¹ / ₂	500	5	126
TP4-1	C	13 ³ / ₄	350	13 ³ / ₄	350	21 ¹ / ₂	550	4 ¹ / ₄	106
TP5-2	C	15 ³ / ₄	400	15 ³ / ₄	400	25 ¹ / ₂	645	4 ¹ / ₄	106
TP6-3	C	21 ¹ / ₂	550	15 ³ / ₄	400	29 ¹ / ₂	750	5	126
TP7-7	G	23 ¹ / ₂	600	15 ³ / ₄	400	23 ¹ / ₂	600	5	126
TP8-8	G	27 ¹ / ₂	700	19	490	29 ¹ / ₂	750	7	176
TP9-9	G	39 ¹ / ₂	1000	19 ¹ / ₂	500	39 ¹ / ₂	1000	5	126
TP10-10	G	47	1190	27 ¹ / ₂	700	47	1200	4	100

Cases come supplied in flat packs for ease of storage and are made up of four sides, two skids and a lid that are assembled by way of cage nuts. The lid is fixed by four bolts into threads at each corner of the top of the case.

TP enclosures are designed to give positive pre positioning of base rails by means of a self locating jig which allows unobstructed access for base drilling and transformer assembly. Please ask for further details.

All enclosure fixings are external, there are no internal brackets.

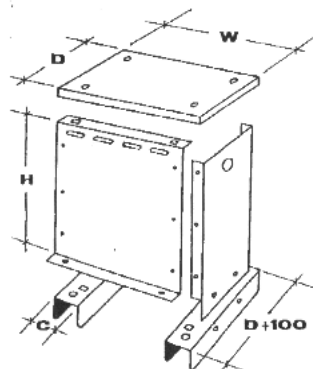
All enclosures are polyester powder coated to RAL7031 texture.

Inlet cabling is either 20mm conduit holes or gland plates at each end of case. **(denoted as entry type "C" or "G")**

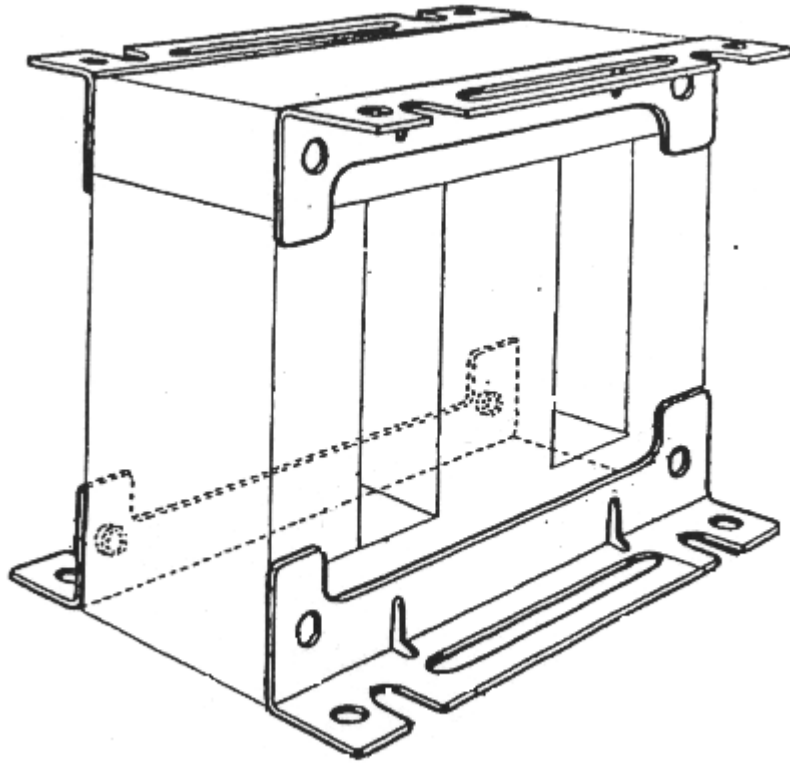
GLAND PLATE DETAIL	GLAND PLATE	APERTURE
TP3-6	135 X 100mm	120 X 60
TP7-7 & TP8-8	150 X 100mm	130 X 80

It is not advised to lift the case by way of eyebolts in the lid.

Lifting points are provided in the skid base or alternatively forks can be used through the skids.



TRANSFORMER FRAMES/ANGLES

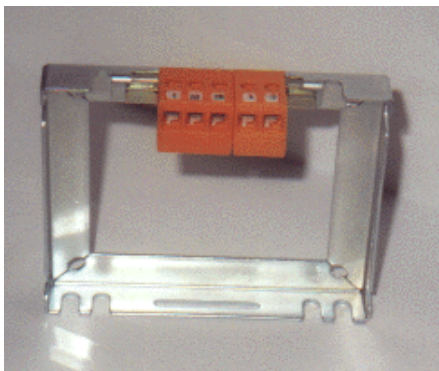


TRANSFORMER END FRAMES

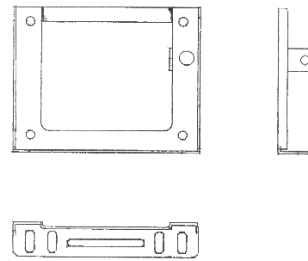
To complement their range of laminations and bobbins ASCO COMPONENTS can offer **English and metric type end frames**. All frames are electro-plated in either bright zinc or zinc/yellow finish.

Frames are either manufactured with CNC precision equipment or are pressed steel components and are supplied in a zinc/yellow finish or bright zinc plate.

Exclusive to ASCO Components is the “**SPEEDFIX**” range of transformer end frames. These frames have an inbuilt terminal mounting bar. Both English (type A) and metric (type A/B) styles are available.



Type A



Type B

UNILAM FRAMES

ASCO Components are also able to offer **UNILAM** frames for sizes 35, 44, 54 and 64.

Drawings for all frames are available. Please call for further details. Alternatively you can download drawings from our website at:

<http://www.ascocomponents.co.uk/>

We are also able to offer a range of terminal mounting rails for standard lamination patterns. Please refer to the section on terminal assemblies elsewhere in this catalogue.

Call our office for your free copy of the “Transformer Hardware” mini catalogue. With dimensions for all our frames and angles this compact catalogue is an essential part of any designer’s reference library.

TRANSFORMER END FRAMES STOCK PROFILE (English style)

English type end frames are finished with rolled edges, chamfered slots and have twin base fixings to allow for ease of access past core bolts.

All frames are bright zinc plated after manufacture.

END FRAME DETAIL

LAMINATION REF.	FRAME STYLE AVAILABLE		
	CUTOUT	SLOTTED	SOLID 2 X OPEN FIXING SLOTS
78	✓	✗	✗
120	✓	✓	✗
248	✓	✓	✗
638 *	✗	✓	✓
750	✗	✓	✓
825	✗	✗	✓
9	✗	✗	✓
217 **	✗	✗	✓

* 6 hole version available in 638.

** Single base fixings only on this type.

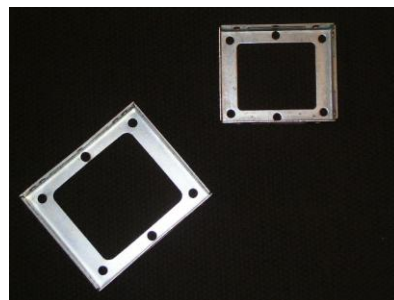
Samples frames are available.

Dimensional drawings of the above frames can be supplied upon request.

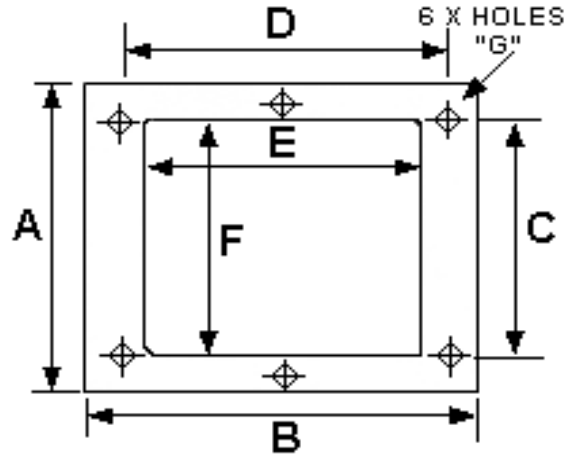
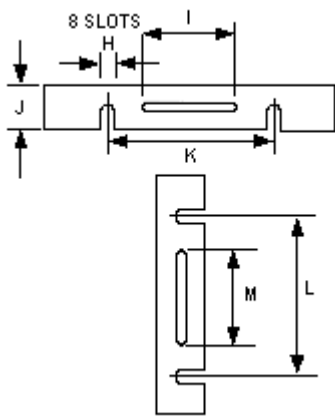
ASCO Components can also supply metric frames with English f/c's for EI180, EI192 and EI240. Please contact us for details.

UFS Style Frames

New additions to complement our range of end frames are UK patterns UFS29 and UFS78. Both sizes are in stock for immediate despatch. Standard finish is RoHS compliant zinc / silver plating.



STANDARD METRIC FRAME DIMENSIONS



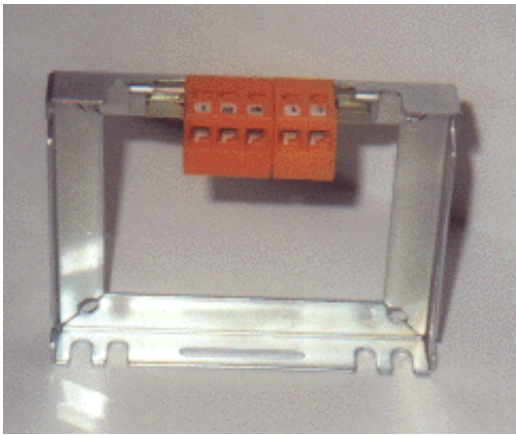
METRIC FRAME DETAIL

FRAME TYPE	UK Equiv.	A	B	C	D	E	F	DIA G	SLOT H	SLOT I	J	K	L	SLOT M
EI75 **	29	66	80	50	62	53	48	5.2	5.2	28 x 4.2	15	45	44	28 x 4.2
EI84	196	71	86	51	69	62	53	5.2	5.2	40 x 4.2	15	55	42	28 x 4.2
EI96	78	83	98	64	80	72	65	5.2	6.5	40 x 4.2	18	57	57	40 x 4.2
EI120	N/A	105	122	80	100	85	78	6.5	6.5	40 x 4.2	21	70	70	40 x 4.2
EI150N	N/A	129	154	99	123	105	85	8.5	7.0	63 x 4.2	23	93. 5	94. 5	63 x 4.2

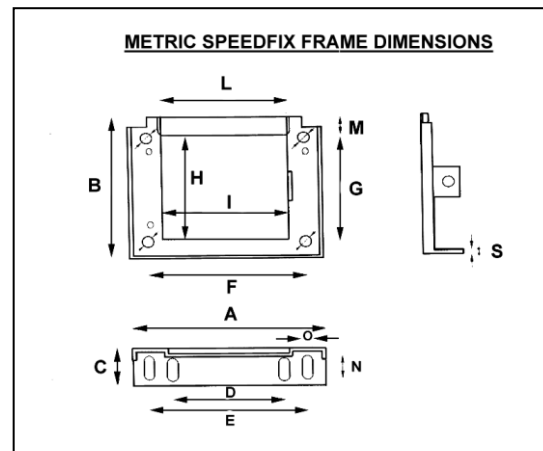
** Please note EI75 is a four-hole frame. The centre holes do not appear in this type.

ASCO Components can also supply metric frames with English f/c's for EI180, EI192 and EI240. Please contact us for details.

SPEEDFIX TRANSFORMER END FRAMES



English style (A)



Metric style (B)

SPEEDFIX end frames are designed to save you time and money when connecting coil leads to a terminal block.

By using **SPEEDFIX** frames you will be able to terminate a transformer in less time and reduce its overall height when compared to a conventional panel type transformer.

SPEEDFIX frames are available in two styles. English size frames, (type A), are CNC produced and have an integral rolled bar which forms into a terminal bar. This type is supplied with a bright zinc plate (BZP) finish. Metric frames, (type B), are a pressed steel component and have an earth point on the frame and are supplied in zinc/yellow passivate.

ASCO Components can also supply terminals, voltage markers and terminal stops to complement the **SPEEDFIX** frame system. Please refer to the section on terminal assemblies elsewhere in this catalogue.

The **SPEEDFIX** system offers an effective solution to the problems of primary and secondary voltage clearances, terminal marking and fingerproofing when designing to BS3535/IEC742.

ADVANTAGES OF THE SPEEDFIX SYSTEM

- **SNAP ON TERMINATING**
- **METRIC AND IMPERIAL SIZES AVAILABLE**
- **STANDARD FIXING CENTRES**
- **REDUCES OVERALL TRANSFORMER HEIGHT**
- **EX - STOCK DELIVERY**
- **COMPATIBLE WITH ASCO TERMINALS**

CLAMPS AND SHROUDS

ASCO Components are also able to supply a range of clamps and shrouds.

Clamps are available from EI19 to EI96 in a variety of stack depths and **we are shortly introducing a range of imperial clamps**. If you have a requirement that you would like us to quote for please contact us.

Shrouds are available from EI60 to EI180.

For more details on the above items please call our office with your enquiry.

******* NEW PRODUCT!!! *******

As of January 2008 we can offer pattern 196 x 1 1/8" clamps from stock.



Further sizes will be available in the near future.

If you have any requirements for clamps or shrouds we can offer a cost effective solution to compare against your current purchases.

TRANSFORMER ANGLES

Our standard range of angles is made from mild steel. Other materials are also available please ask for details.

Angles are either pressed steel components or are produced with CNC precision machinery. Pressed steel components are supplied in a zinc/yellow passivate and CNC components are finished in bright zinc plate.

Drawings are available for all angles. Please call for more information or visit our website.

ANGLES ARE IN STOCK FOR THE FOLLOWING LAMINATIONS:

<u>English "EI" Single Phase Sizes</u>	
120	
<u>English 3 Phase Sizes</u>	
100A	221A
<u>Metric "3UI" Three Phase</u>	
3UI60 (100 X 100)	3UI75 (125 X 125)
3UI90 (150 X 150)	3UI102 (170 X 170)
3UI114 (190 X 190)	3UI120 (200 X 200)
3UI150 (250 X 250)	3UI180 (300 X 300)
3UI210 (350 X 350)	3UI240 (400 X 400)
3UI300 (500 X 500)	
<u>Metric "UI" Single Phase</u>	
UI180	UI210
UI240	
<u>Metric "EI" Single Phase</u>	
EI75	EI84
EI96	EI120
EI150N	EI174

We can also quote for special angles. Please contact us to discuss your requirements.

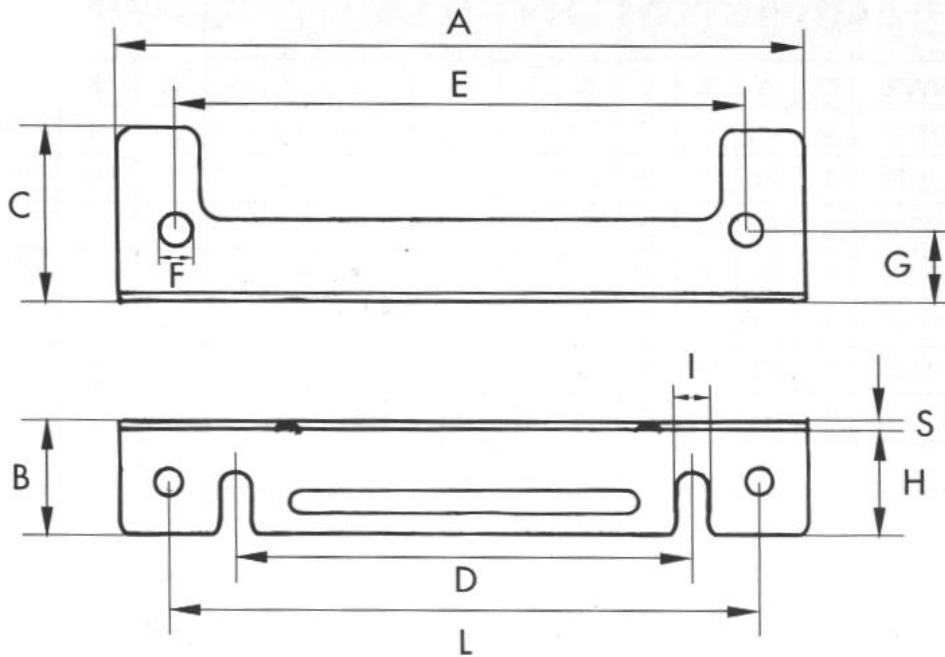


UNIT 19,
GREEN LANE INDUSTRIAL ESTATE
SECOND AVENUE
BORDESLEY GREEN
BIRMINGHAM
B9 5QP

TEL : 0121 773 3090
FAX : 0121 773 3390

www.ascocomponents.co.uk

sales@ascocomponents.co.uk



METRIC ANGLE DETAIL

ANGLE TYPE	ASCO REF.	A	B	C	D	E	F	G	H	OPEN SLOT I	S	L	SLOT M
EI75	AN/EI75	75	14.5	20	53	62.5	4.2	9	12	4 X 7.5	1.5	N/A	4.5 X 42
EI84	AN/EI84	84	17	26	60	70	5.2	11	14	5 X 8	1.5	75	5 X 43.5
EI96	AN/EI96	96	18.5	26	68	80	5.5	12	16	5 X 9	1.5	85	5 X 51
EI120	AN/EI120	120	20	31	80	100	6.5	14	18.5	6.5 X 11.5	1.5	104	5 X 61
EI150N	AN/EI150	150	22	36	105	125	7.5	15	18.5	7 X 12	1.5	131	5 X 38.5 (X2)

Note:

EI75 No round holes "F" in base flange.
EI150N 2 off 5mm x 38.5mm slots in base flange positioned end to end.

MISCELLANEOUS ITEMS



ASCO Components also offer the following transformer related products:

- GRAIN ORIENTED STEELS (COILS AND CUT CORES)
- NON-ORIENTED STEELS (COILS AND CUT CORES)
- DOGBONE DUCT STRIP
- POLYESTER GLASS SHEET / PROFILES
- CUSTOM MADE BASEPLATES, FIXING JIGS...ETC.

FOR ALL YOUR TRANSFORMER COMPONENTS

“ CONSIDER ASCO FIRST”

CALL ON

TELEPHONE 0121 773 3090

FAX 0121 773 3390

E-mail: info@ascocomponents.co.uk

www.ascocomponents.co.uk